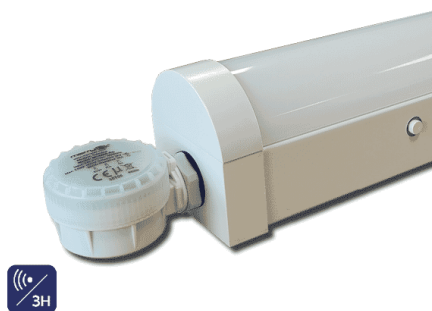


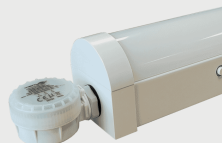
## FOXTON BATTEN TRI-COLOUR 1800MM (6FT) 35W MICROWAVE SENSOR ON/OFF

NET-41-11-65



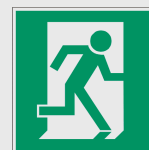
### External On/Off Microwave Sensor

Save energy costs with a fitting that only comes on when movement is detected



### 3 Hour Emergency operation

The integral Emergency Battery ensures the fitting stays on in the event of an emergency or power failure



## Features & Benefits

- 3H Emergency function
- On/Off Microwave Sensor ensures the fitting only comes on when movement is detected
- Selectable colour temperature 3000K, 4000K or 5700K
- Rear or end cable entry
- Tridonic driver as standard
- Push connector for quick and easy installation

## Key Data

<b>Power</b>	35W
<b>Luminous Flux</b>	4550lm
<b>Colour Temperature</b>	3000K/4000K/5700K
<b>IP Rating</b>	IP20
<b>IK Rating</b>	IK04
<b>Dimensions</b>	1820 x 63 x 73mm
<b>Warranty</b>	5 Years (Registration Required)

## Compatible Accessories

NET-46-16-04	Universal LED NCF / Batten Suspension Kit
--------------	---

### NET LED Lighting

Buckingham Business Park, 300 Anderson Road,  
Swavesey, Cambridge, CB24 4UQ

T: 01223 851505 | [sales@netled.co.uk](mailto:sales@netled.co.uk) | [www.netled.co.uk](http://www.netled.co.uk)



**ORDER BY 6PM**  
FOR NEXT DAY DELIVERY

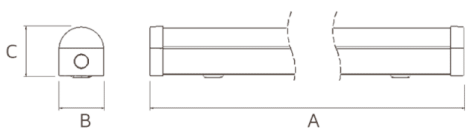
Technical Specifications

Input Voltage (AC)	220-240V
Power Factor	>0.90
Luminaire Efficacy	130lm/W
LED Manufacturer	Jingrui
LED Type	SMD 2835
No. of LEDs	352
Driver Manufacturer	Tridonic Advanced Series
Driver Output Voltage (DC)	20-54V
Total Circuit Power (W)	35W
Electrical Class	1
Colour Rendering	>80 CRI
Lamp Viewing Angle	120°
Dimmable	No
Flicker-Free	Yes
Operating Temp.	0°C to +45°C
Lifespan LM80	50,000 Hours
UGR Rating	More than 22
Manufacturer	Senselight
Fire Rating	V2
Hours Maintained	3H
Lux Levels	5lux-150lux or Disabled
Max. Detection Distance	12m
Self Test	No
Housing Colour	White
Housing Material	Steel
Battery Pack	LiFePO4
Detection Angle	150° (wall mount) / 360° (ceiling mount)
Diffuser Material	Polycarbonate
Duration	5s-30min

Other Options

Description		
Emergency Operation	>3H	Foxtan Batten Tri-Colour 1800mm (6ft) 35W Standard
Emergency Mode	Streamer	Foxtan Batten Tri-Colour 1800mm (6ft) 35W Emergency
Sensor Manufacturer	Merrytek	Foxtan Batten Tri-Colour 1800mm (6ft) 35W Self Test Emergency
Sensor Rating	IP20	Foxtan Batten Tri-Colour 1800mm (6ft) 35W Dimmable one4all
NET-41-11-67		Foxtan Batten Tri-Colour 1800mm (6ft) 35W Dimmable Emergency
NET-41-11-61		Foxtan Batten Tri-Colour 1800mm (6ft) 35W Dimmable DALI Emergency
NET-41-11-62		Foxtan Batten Tri-Colour 1800mm (6ft) 35W PIR Sensor On/Off
NET-41-11-63		Foxtan Batten Tri-Colour 1800mm (6ft) 35W PIR Sensor On/Off Emergency
NET-41-11-64		Foxtan Batten Tri-Colour 1800mm (6ft) 35W Microwave Sensor On/Off
NET-41-11-65		Foxtan Batten Tri-Colour 1800mm (6ft) 35W Microwave Sensor On/Off Emergency

PRODUCT DIMENSIONS



Size (ft)	A	B	C
2	600	63	73
4	1200	63	73
5	1500	63	73
6	1800	63	73

All units are in mm

NET LED Lighting

Buckingham Business Park, 300 Anderson Road,  
Swavesey, Cambridge, CB24 4UQ

T: 01223 851505 | sales@netled.co.uk | www.netled.co.uk



ORDER BY 6PM  
FOR NEXT DAY DELIVERY

powered by

**TRIDONIC**

3K

4K

5.7K

## SELECTABLE COLOUR TEMPERATURE

Choose your colour temperature  
3000K, 4000K or 5700K

## COMBINED DIFFUSER AND LEDS

Stop juggling multiple parts  
and install a diffuser that comes  
with built-in LEDs

## PUSH CONNECTOR

Reduce installation time with  
easy-to-use push fit terminals

## REAR OR END CABLE ENTRY

Create seamless  
end-to-end lighting designs

**TRIDONIC ADVANCED 2 DRIVER**  
AS STANDARD