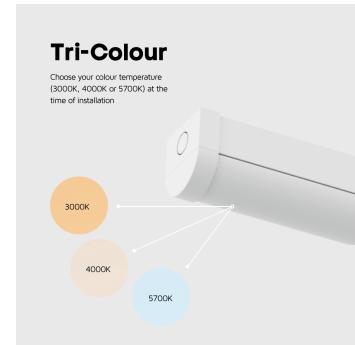
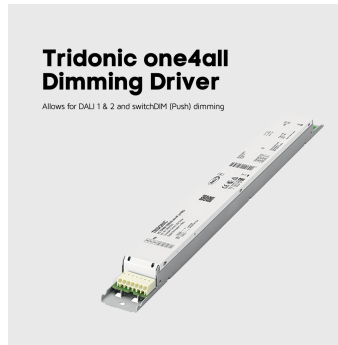
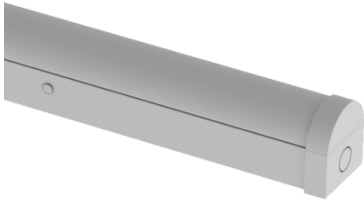


**FOXTON BATTEN TRI-COLOUR 1500MM (5FT) 25W DIMMABLE ONE4ALL**

NET-41-11-06


**Features & Benefits**

- Tridonic one4all Dimming - DALI 1 & 2 and switchDIM (Push)
- Selectable colour temperature 3000K, 4000K or 5700K
- Rear or end cable entry
- Tridonic driver as standard
- Push connector for quick and easy installation
- Diffuser comes with built-in LEDs

**Key Data**

<b>Power</b>	25W
<b>Luminous Flux</b>	3250lm
<b>Colour Temperature</b>	3000K/4000K/5700K
<b>IP Rating</b>	IP20
<b>IK Rating</b>	IK04
<b>Dimensions</b>	1520 x 63 x 73mm
<b>Warranty</b>	5 Years (Registration Required)

**Compatible Accessories**

NET-61-33-04	DALI Emergency Kit 3W/6W
NET-42-43-38	Merrytek Microwave Sensor IP65 20mm Knock Out
NET-46-16-04	Universal LED NCF / Batten Suspension Kit
NET-42-43-24	DALI Dimmer Switch
NET-51-11-01	PIR Sensor (External) for Battens and NCFs
NET-51-11-03	On/Off Step Dimming Sensor (External) for Battens and NCFs

**NET LED Lighting**

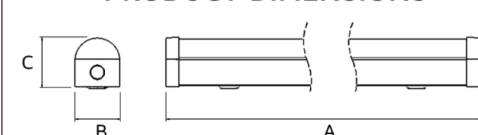

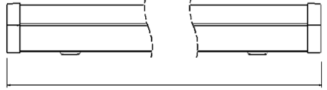
 Buckingham Business Park, 300 Anderson Road,  
 Swavesey, Cambridge, CB24 4UQ

T: 01223 851505 | sales@netled.co.uk | www.netled.co.uk


**ORDER BY 6PM**  
 FOR NEXT DAY DELIVERY

## Technical Specifications

Input Voltage (AC)	220-240V
Power Factor	>0.90
Luminaire Efficacy	130lm/W
LED Manufacturer	Jingrui
LED Type	SMD 2835
No. of LEDs	264
Driver Manufacturer	Tridonic Premium Series
Driver Output Voltage (DC)	20-54V
Total Circuit Power (W)	25W
Electrical Class	1
Colour Rendering	>80 CRI
Lamp Viewing Angle	120°
Dimmable	Yes
Flicker-Free	Yes
Operating Temp.	-10°C to +40°C
Lifespan LM80	50,000 Hours
UGR Rating	More than 22
Weight	1.775Kg
Manufacturer	Senselight
Fire Rating	V2
Housing Colour	White
Housing Material	Steel
Diffuser Material	Polycarbonate
Dimming Input Type	Tridonic one4all Dimming - DALI 1 & 2 and switchDIM (Push)

PRODUCT DIMENSIONS			
			
Size (ft)	A	B	C
2	600	63	73
4	1200	63	73
5	1500	63	73
6	1800	63	73

All units are in mm

## Other Options

Description	
NET-41-11-93	Foxtton Batten Tri-Colour 1500mm (5ft) 25W Standard
NET-41-11-94	Foxtton Batten Tri-Colour 1500mm (5ft) 25W Emergency
NET-41-12-94	Foxtton Batten Tri-Colour 1500mm (5ft) 25W Self Test Emergency
NET-41-11-06	Foxtton Batten Tri-Colour 1500mm (5ft) 25W Dimmable one4all
NET-41-11-07	Foxtton Batten Tri-Colour 1500mm (5ft) 25W Dimmable Emergency
NET-41-11-77	Foxtton Batten Tri-Colour 1500mm (5ft) 25W Dimmable DALI Emergency
NET-41-11-78	Foxtton Batten Tri-Colour 1500mm (5ft) 25W PIR Sensor On/Off
NET-41-11-79	Foxtton Batten Tri-Colour 1500mm (5ft) 25W PIR Sensor On/Off Emergency

## NET LED Lighting

Buckingham Business Park, 300 Anderson Road,  
Swavesey, Cambridge, CB24 4UQ



**ORDER BY 6PM**  
FOR NEXT DAY DELIVERY

T: 01223 851505 | sales@netled.co.uk | www.netled.co.uk

**COMBINED DIFFUSER AND LEDS**

Stop juggling multiple parts and install a diffuser that comes with built-in LEDs

**FLICKER-FREE TRIDONIC DIMMABLE DRIVER**

Ensure reliability, durability and performance leading to long-lasting LEDs

*Dimmable options only*

**NEW**

**MANUAL OR SELF TEST EMERGENCY SELECTABLE**

Choose between manual emergency or self test emergency at the time of installation

*Emergency options only*

**REAR OR END CABLE ENTRY**

Create seamless end-to-end lighting designs

**WIRELESS CONTROL**

Control the panel remotely via smartphone or tablet with it's Bluetooth Dimmable Driver

*Bluetooth options only*

**SELECTABLE COLOUR TEMPERATURE**

Choose your colour temperature 3000K, 4000K or 5700K

3K

4K

5.7K