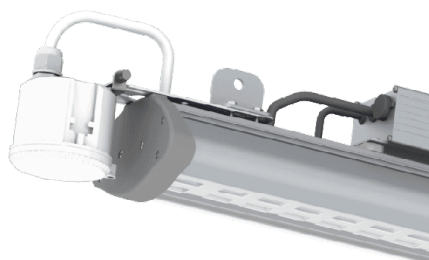


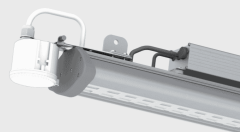
## BURWELL LINEAR HIGH BAY 5000K 150W MOTION SENSOR EMERGENCY

NET-23-12-29



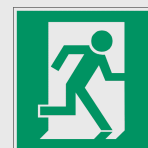
### External Microwave Sensor

Save energy costs with a Standby Function of 0 or 25%



### High power 20W Emergency function

The integral Emergency Battery ensures the fitting stays on in the event of an emergency or power failure



### Features & Benefits

- High Power 20W Emergency function
- Microwave Dimming Sensor - 15m detection range, 5-150lux
- 0%, 10% or 25% Standby Mode
- Aluminium housing for outstanding heat dissipation performance and a longer lifespan
- Energy efficient - up to 133lm/W
- IP65 and IK10 rated housing

### Key Data

Power	150W
Luminous Flux	20000lm
Colour Temperature	5000K
IP Rating	IP20
IK Rating	IK10
Dimensions	905 x 135 x 72mm
Warranty	5 Years (Registration Required)

### Compatible Accessories

NET-42-43-22	Merrytek Remote Control for Sensors
NET-23-16-23	Surface Mount Bracket

### NET LED Lighting

Buckingham Business Park, 300 Anderson Road,  
Swavesey, Cambridge, CB24 4UQ

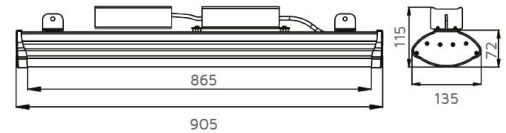
T: 01223 851505 | [sales@netled.co.uk](mailto:sales@netled.co.uk) | [www.netled.co.uk](http://www.netled.co.uk)



**ORDER BY 6PM**  
FOR NEXT DAY DELIVERY

## Technical Specifications

Input Voltage (AC)	100-270V
Power Factor	>0.90
Luminaire Efficacy	133lm/W
LED Manufacturer	Sanan
LED Type	SMD 2835
No. of LEDs	360
Driver Manufacturer	Tomcarline
Driver Output Voltage (DC)	42V
Total Circuit Power (W)	150W +/- 5W
Electrical Class	1
Colour Rendering	>80 CRI
Lamp Viewing Angle	70°
Operating Temp.	0°C to +45°C
Lifespan LM80	50,000 Hours
UGR Rating	Less than 22
Weight	5.5Kg
Manufacturer	FYTLED
Fire Rating	V0
Luminous Flux Factor	13.33%
Self Test	No
Housing Colour	Grey
Housing Material	Aluminium
Battery Pack	LiFePO4
Diffuser Material	Polycarbonate
Emergency Kit	3 Year Warranty
Emergency Operation	>3H
Emergency Pack	Streamer



## Other Options

Description	
NET-23-12-18	Burwell Linear High Bay 5000K 150W Standard
NET-23-12-20	Burwell Linear High Bay 5000K 150W Emergency
NET-23-12-28	Burwell Linear High Bay 5000K 150W Motion Sensor
NET-23-12-29	Burwell Linear High Bay 5000K 150W Motion Sensor Emergency

### NET LED Lighting

Buckingham Business Park, 300 Anderson Road,  
Swavesey, Cambridge, CB24 4UQ



**ORDER BY 6PM**  
FOR NEXT DAY DELIVERY

T: 01223 851505 | [sales@netled.co.uk](mailto:sales@netled.co.uk) | [www.netled.co.uk](http://www.netled.co.uk)

**130**  
lm/W

## 1-10V DIMMABLE AS STANDARD

Turn your Standard fitting into a Dimmable one in minutes

## 0 OR 25% STANDBY MODE

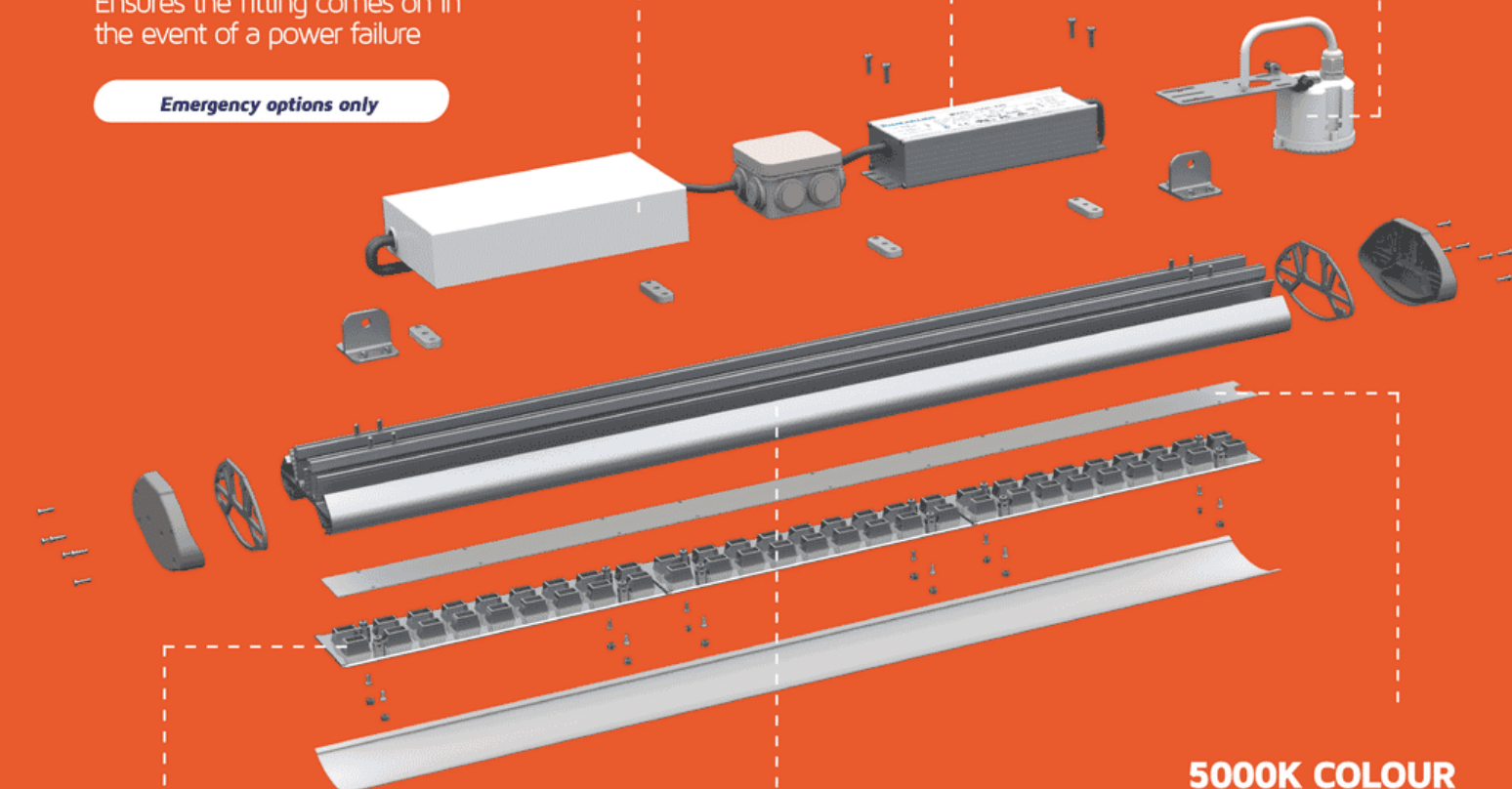
Reduce unnecessary energy consumption by avoiding lighting in areas that don't need it

*Microwave Sensor options only*

## 20W HIGH OUTPUT EMERGENCY OPERATION

Ensures the fitting comes on in the event of a power failure

*Emergency options only*



## HONEYCOMB REFLECTOR

Reduce glare and improve eye comfort in sports halls and warehouses

## 5000K COLOUR TEMPERATURE

Bright and crisp light best used for warehouses or sports halls

5K

## IP65 AND IK10 RATED ALUMINIUM HOUSING

Protect your fitting from water, dust and impact

