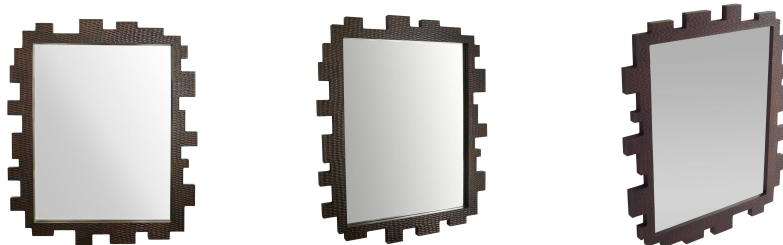
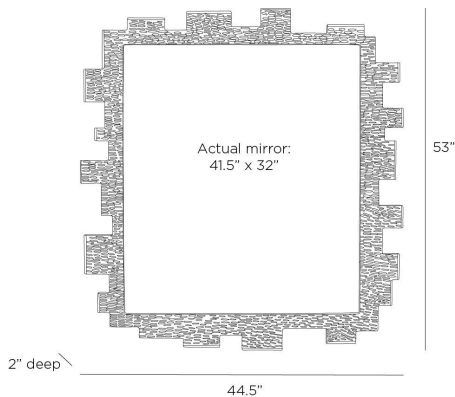


# ARTERIO RS

## HEWITT MIRROR



WMI56  
Black Cherry, Mango Wood

Energizing, rhythmic patterns elevate our Hewitt mirror. Inspired by puzzles and notching, a black cherry-finished mango wood frame is crafted with a dramatic, hand-carved texture. Designed to be hung vertically or horizontally, it is secured with a cleat attachment for hanging. Finish will vary.

### APPEARANCE

Materials	Mango Wood, Mirror
Finishes	Black Cherry, Plain
Finish Will Vary	Yes
Top Coat/Sealant	Yes

### DIMENSIONS

Overall	W: 44.5 in x D: 2 in x H: 53 in
Actual Mirror	W: 32 in x H: 41.5 in

### SHIPPING

Shipping Requirements	Truck Ship
Product Weight	48.7 lbs
Gross Weight 1	58.0 lbs
Shipping Box 1	W: 8 in x D: 57 in x H: 49 in

### ADDITIONAL INFO

Features	T-Screw Hardware Included
Hanger Position	Vertical & Horizontal

### CONTRACT

Contract Suitability	Contract Suitable As Is
----------------------	-------------------------