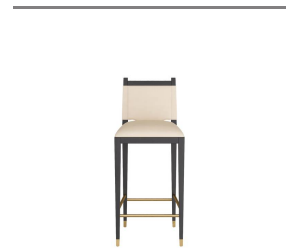


BURDOCK BAR STOOL



FS107
 Vanilla Leather
 H: 41.5 IN
 W: 18.5 IN
 D: 20 IN



Tapered legs and straight lines lend a masculine appeal to our tailored ebony finished beech wood bar stool. For comfort and style, we wrapped the t-shaped and well-padded seat in vanilla leather. Finished with non-functional snap details and tipped at each leg with antique brass sabots. Leather will vary.

