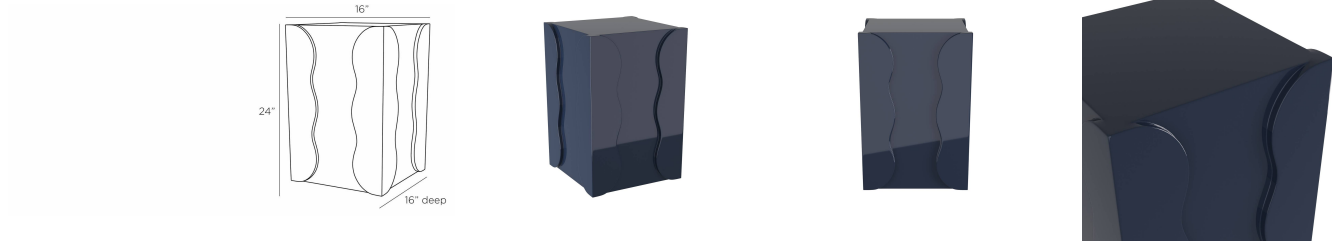


ARTERIO RS

ZITA ACCENT TABLE



FAS03
Navy, Fiberglass

The bold colors and playful geometric shapes of the 1980s find a contemporary revival in our luxe lacquered design. Each sleek side is enhanced with a “squiggle”-edged layer for visual interest. Finished in navy lacquer, it is padded at the bottom for durability.

APPEARANCE

Materials	Fiberglass
Finishes	Navy
Finish Will Vary	No
Top Coat/Sealant	No

DIMENSIONS

Overall	W: 16 in x D: 16 in x H: 24 in
Foot Print	W: 16 in x D: 16 in
Diagonal Dimensions	W: 28.5 in

SHIPPING

Product Weight	34.2 lbs
Gross Weight 1	39.68 lbs
Shipping Box 1	W: 20.0 in x D: 20.0 in x H: 27.0 in

ADDITIONAL INFO

Base/Foot Type	Felt Pads
----------------	-----------

CONTRACT

Contract Suitability	Contract Suitable With Conditions
Contract Conditions	For an additional fee, a clear, protective coating can be added

SWATCHES

NLSW 4x4 Swatch: Navy Lacquer