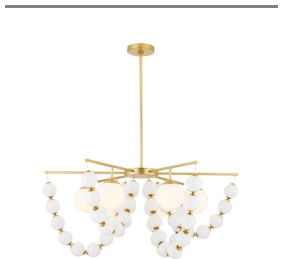


GENESIS CHANDELIER



DSC08  
Opal  
H: 21.5 IN  
Dia: 42.0 IN



The lavishness of layered necklaces is reflected in the jewelry-inspired Genesis. Swagged and draped along a framework of antique brass-plated steel, strings of opal seedy glass baubles add a dramatic accompaniment to opal glass shades. With a framework, pipe, and canopy of antique brass-plated steel, this elegant fixture adds instant glamour wherever it is placed. Certified for damp locations and intended for interior use.

