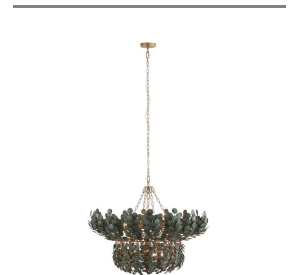


BILAL CHANDELIER



DMS14
 Eucalyptus Coconut
 Shell
 H: 34 IN
 Dia: 40.0 IN



The lush allure of tropical foliage informs the two-tiered Bilal. Suspended from antique brass iron finished chain, discs of sustainable coconut shells are strung together to reveal a vision of illumination. Finished in a rich eucalyptus hue inspired by succulent plants. Finish will vary.

