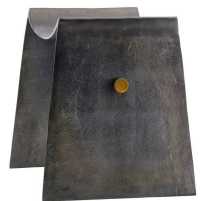


MONTEZ STOOL



4670
 Blackened Iron
 H: 20.5 IN
 W: 22 IN
 D: 18 IN



Founded on the hallmarks of industrial design, the Montez possesses a style that is both unique and utilitarian. The blackened iron sling-like seat seamlessly blends into two sled-style legs as one continuous piece. The curvature of the seat is perfectly countoured for comfort. Finish will vary.

