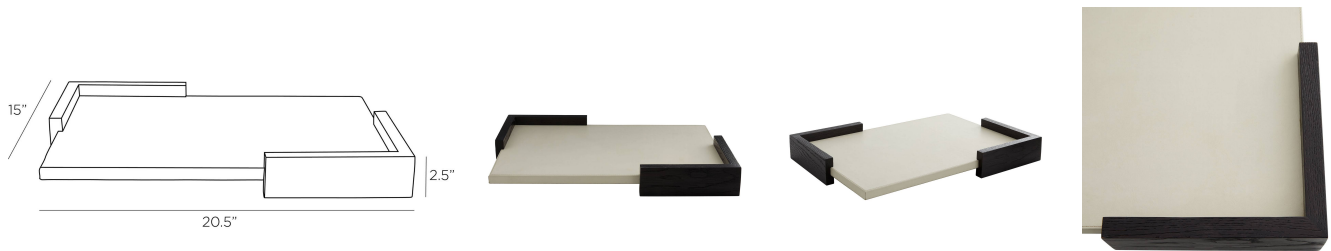


# ARTERIOS

## ODIN TRAY



4643  
Ivory, Leather

This tray, made from a pairing of oak and leather, is an eye-catching piece on its own. The unique, modern design recalls the Bauhaus movement, with dramatic angles and bold presence. The plank is wrapped in rich, ivory leather for a sophisticated touch, anchored on adjacent corners in ebony-finished oak. Leather and wood will vary.

### APPEARANCE

Materials	Leather, Leather, Oak Wood
Finishes	Ivory, Ivory, Ebony
Finish Will Vary	Yes
Top Coat/Sealant	No

### DIMENSIONS

Overall	W: 20.5 in x D: 15 in x H: 2.5 in
Foot Print	W: 20.5 in x D: 15 in

### SHIPPING

Product Weight	7.0 lbs
Gross Weight 1	9.0 lbs
Shipping Box 1	W: 4.5 in x D: 17.0 in x H: 27.0 in

### CONTRACT

Contract Suitability	Contract Suitable As Is
----------------------	-------------------------