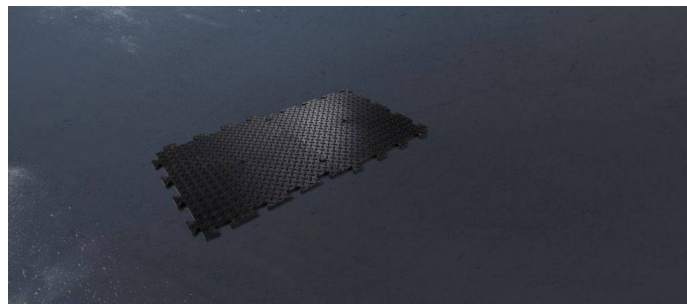


# Rhino Tile™



## Product Specification

Colour	Black tiles, yellow edge strips
Material	Flexible PVC (Poly Vinyl Chloride) fraction from electric cable recycling post-consumer waste – 90-93% Elastomers (rubber) – 1-2% Metals - <2% Other Polymers (PA, PC, PS) - <1% TOTAL – 100%
Slip Resistance	BS EN 7188 Anti-slip to EN13036-4 2003: (Dry: 100 PTV and Wet: 50 PTV)
Thickness	14mm
Weight	Per Tile - 1.85kg

## Range

Code	Size
RHINOTILE500MM	500mm x 500mm
RAMPEDGEFEMALYEL	500mm Female Ramp Edge
RAMPEDGEMALEYELL	500mm Male Ramp Edge

## Features & Benefits

- Anti-slip checker profile
- Interlocking to create a strong joint
- Extreme heavy duty for protection against vehicles & site machinery
- Easy to clean, maintain and reuse

## Certification

Fire Certification - EN 13501-1:2007+A1:2009 Certificate Nr WF 350 227:

Classification: BFL - S1

## Installation Instructions/Guidelines

- Refer to separate installation guide

## Handling & Storage

- Store in ambient conditions.

Product Disclaimer

The information provided in all product, safety and technical data sheets is to the best of our knowledge correct but not all-inclusive and without warranty and is to be used solely as a guide. Similarly, all technical advice, whether verbal, in writing, or as a result of sample trials, is for guidance and is given in good faith but without warranty, since site conditions, care and skill of application are beyond our control. Protec International Ltd can accept no liability for the performance of our products, or any damage resulting from handling or contact beyond the value of the material supplied. This does not affect your statutory rights.

Every effort to ensure the accuracy of the images of our products has been made, however the accuracy of the colours may differ and vary according to your computer monitor.

Please contact our Customer Services Department on 0800 834 704 for further information.

DOC REF: Rhino Tile™ 22 January 2026

