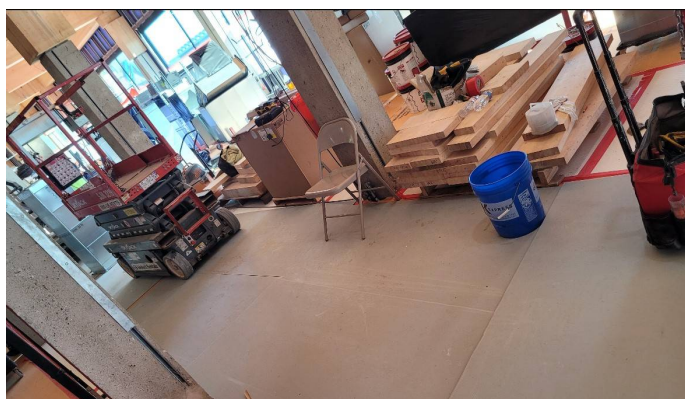


# ImpactBoardRE 2500



## Product Specification

Colour	Light Grey
Material	Polypropylene
Tolerance	+/-5%
Weight	6mm – 2500gsm

## Range

Code	Size
ImpactBoardRE 2500	2.25m x 1m

## Installation Instructions/Guidelines

- Dependent on application
- Please contact our technical team for specific advice

## Handling & Storage

- Store in ambient conditions.

## Features & Benefits

- Tough and durable design for high traffic and heavy loads
- Made out of 80% post consumer waste material
- Lightweight and easy to cut
- GreenCircle Certified
- Waterproof and resistant to warping

## Applications

Floor protection

## Product Disclaimer

The information provided in all product, safety and technical data sheets is to the best of our knowledge correct but not all-inclusive and without warranty and is to be used solely as a guide. Similarly, all technical advice, whether verbal, in writing, or as a result of sample trials, is for guidance and is given in good faith but without warranty, since site conditions, care and skill of application are beyond our control. Protec International Ltd can accept no liability for the performance of our products, or any damage resulting from handling or contact beyond the value of the material supplied. This does not affect your statutory rights.

Every effort to ensure the accuracy of the images of our products has been made, however the accuracy of the colours may differ and vary according to your computer monitor.

Please contact our Customer Services Department on 0800 834 704 for further information.

DOC REF: ImpactBoardRE 2500 11 February 2026



0800 834 704 | 01625 855600  
enquiries@protection.co.uk  
www.protection.co.uk

