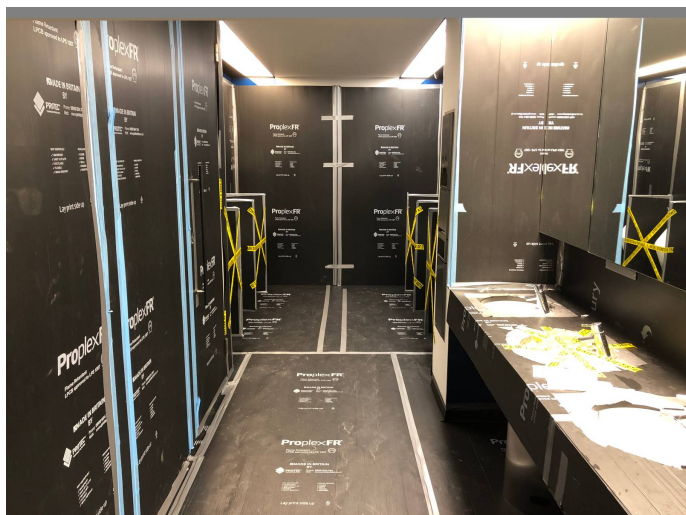


Proplex Flame Retardant Protection Sheet - Black



Product Specification

Colour	Black
Material	Flame Retardant polypropylene
Recycled Content	Appx 25%
Thickness	2mm-3mm
Weight (g/m2)	250g-400g

Installation Instructions/Guidelines

- Recommended for use as temporary protection for finished surfaces, including: architectural ironmongery, ceramic/stone, cladding, columns, concrete/cement screeds, curtain walling, doors, external protection, joinery, raised access floors, resin, stairs, timber, windows/glazing and vinyl.

Handling & Storage

- Store in ambient conditions.

Features & Benefits

- Flame retardant certified to LPS1207 approved by LPCB.
- Effective protection for floors, doors, walls, and worktops.
- 2.4m x 1.2m
- Easy to cut, crease and bend.
- Easy to trim to size without creating harmful dust.

Product Disclaimer

The information provided in all product, safety and technical data sheets is to the best of our knowledge correct but not all-inclusive and without warranty and is to be used solely as a guide. Similarly, all technical advice, whether verbal, in writing, or as a result of sample trials, is for guidance and is given in good faith but without warranty, since site conditions, care and skill of application are beyond our control. Protec International Ltd can accept no liability for the performance of our products, or any damage resulting from handling or contact beyond the value of the material supplied. This does not affect your statutory rights.

Every effort to ensure the accuracy of the images of our products has been made, however the accuracy of the colours may differ and vary according to your computer monitor.

Please contact our Customer Services Department on 0800 834 704 for further information.

DOC REF: Proplex Flame Retardant Protection Sheet - Black 29 August 2025



0800 834 704 | 01625 855600
enquiries@protection.co.uk
www.protection.co.uk

