

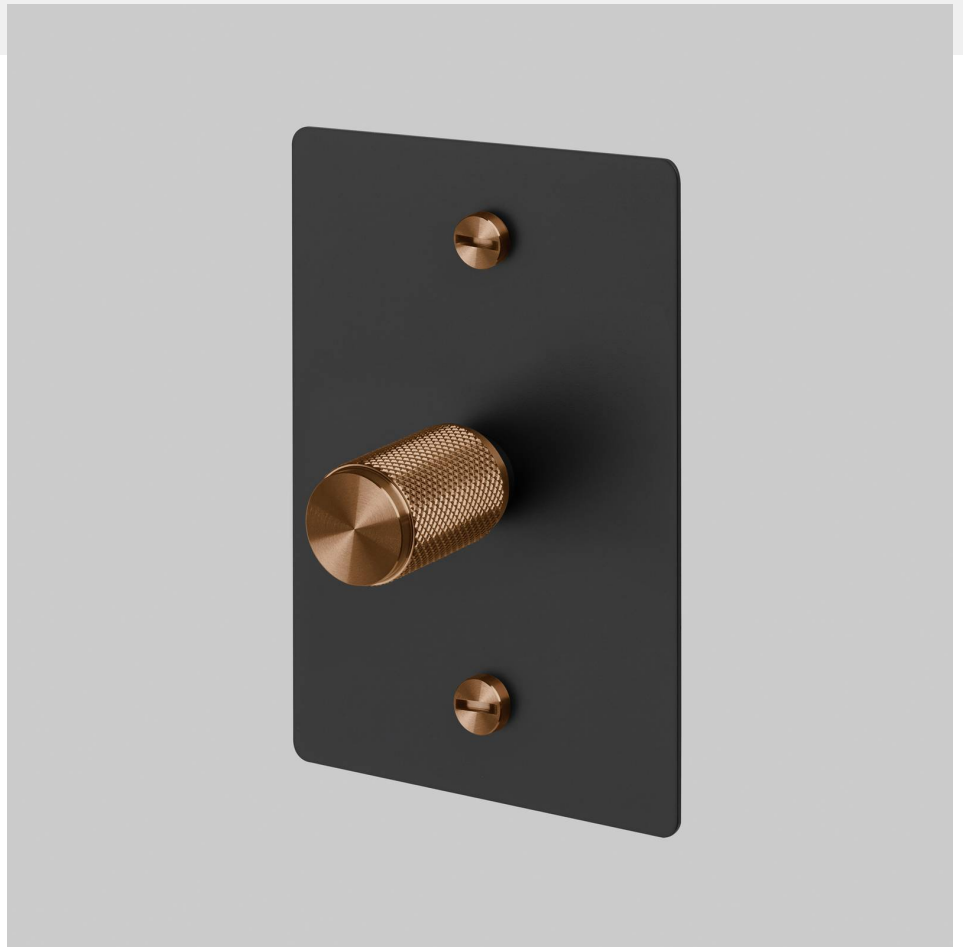
**1G DIMMER /
VERTICAL / 100W /
CROSS / BLACK /**

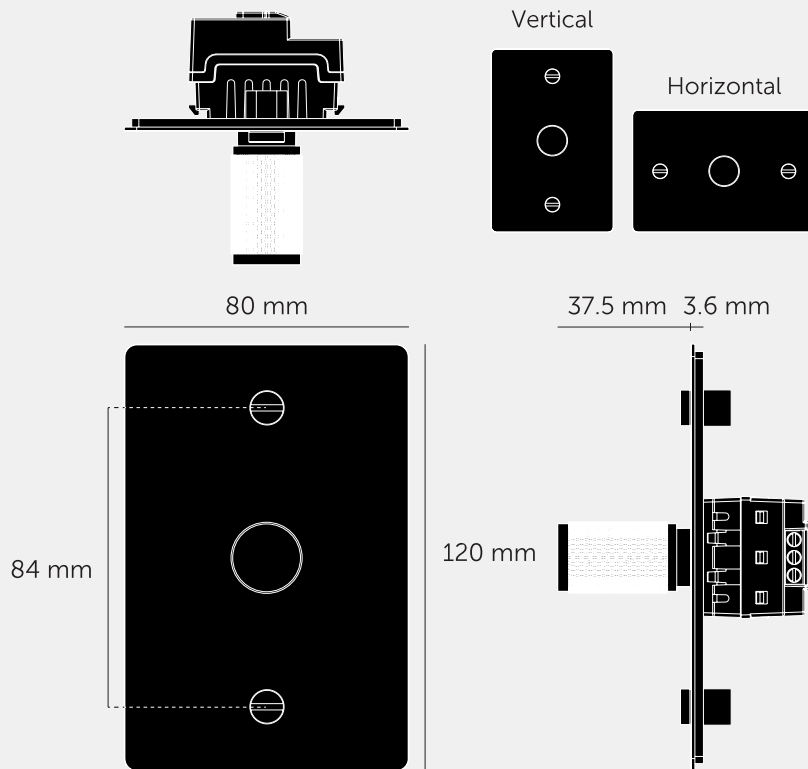
ACTION: DIMMER SWITCH

KNURL: CROSS

RANGE: DIMMER SWITCH

A 1G LED dimmer switch (100W) with a diamond-cut cross knurled knob to feel amazing with every touch. The dimmer comes with our new dimmer module with improved performance. This modular dimmer switch is designed for vertical installation, and the components will be delivered in separate boxes.





SPECIFICATIONS

Style: Push On / Off Rotary Dimmer
Switching: 2-Way
Input: 240VAC
Dimming Type: Auto Detect Trailing Edge & Leading Edge
Load: 10-250W - Incandescent / 2-100W - LED
Compatibility: For use with standard 1, 2 & 3 way switch circuits. Not compatible with Retractive Switching
For Use In: Australia, Europe & New Zealand
Certification: CE / EAC / SAA / UKCA BS EN60669-2-1, AS/NZS 60669.2.1, AS/NZS 60669.1

INCLUDED

1 x 1G Wall Plate
1 x 100W Dimmer Module
1 x Dimmer Detail Kit (with Plate Details)

FINISH & SKU NUMBERS

sku:	finish:	size:
ZDK-134857	black / warm sunset	1G

PLEASE NOTE

DISCLAIMER: Always consult a trade professional when installing this product. Buster + Punch is not responsible for the usage or feasibility of installation requirements. This product is not suitable for damp or wet environments.

CARE INSTRUCTIONS

Wipe with a dry lint free cloth with no loose hairs, avoid using any chemicals. Please note that finishes may age naturally with time and regular use.