

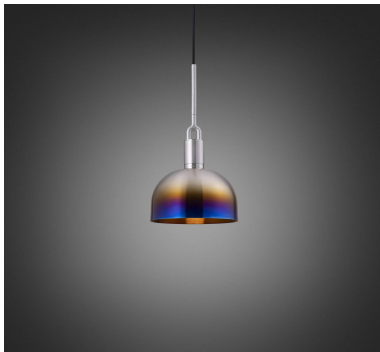
**FORKED PENDANT /
LINEAR / SHADE /
MEDIUM**

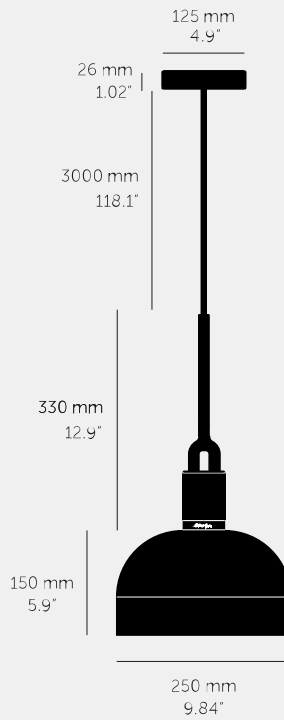
ACTION: PENDANT LIGHT

KNURL: LINEAR

RANGE: FORKED

A light pendant made from cast and machined metal, featuring our signature diamond-cut linear knurl pattern and fork detailing, refined by hand. Its shade is made from hand-spun metal.








SPECIFICATIONS

Pendant light
1x solid metal lamp holder
Adjustable 3000 mm cable
E26 / 110-120 VAC / 60HZ
Max 7W
Bulb included
cULus Listed SBLED
1x solid metal light shade

INCLUDED

1 x Forked Pendant
1 x Forked Shade
1 x Punch Bulb / Puck

FINISH & SKU NUMBERS

| sku: | finish: | size: |
|------------|---|--------|
| NFP-813167 |  brass | MEDIUM |
| NFP-893197 |  burnt steel | MEDIUM |
| NFP-863187 |  gun metal | MEDIUM |
| NFP-833177 |  steel | MEDIUM |

CARE INSTRUCTIONS

Wipe with dry cloth with no loose hairs, avoid using any chemicals. Please note all finishes are prone to aging.

PLEASE NOTE

DISCLAIMER: Always consult a trade professional when installing this light. Buster + Punch is not responsible for the usage or feasibility of installation requirements. This product is not suitable for damp or wet environments.