

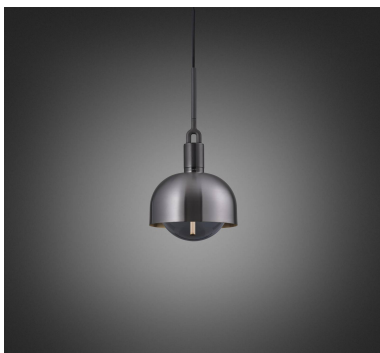
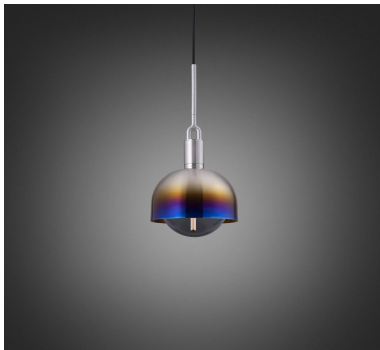
**FORKED PENDANT /
LINEAR / SHADE /
GLOBE / SMOKED /**

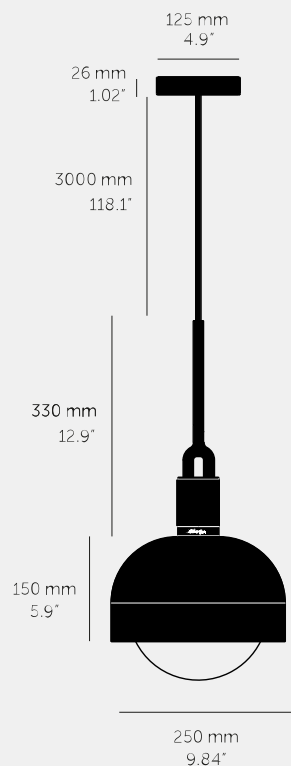
ACTION: PENDANT LIGHT

KNURL: LINEAR

RANGE: FORKED

A light pendant made from cast and machined metal, featuring our signature diamond-cut linear knurl pattern and fork detailing, refined by hand. Its shade is made from hand-spun metal and it comes with a handblown glass globe.






SPECIFICATIONS

Pendant light
1x solid metal lamp holder
Adjustable 3000 mm cable
E26 / 110-120 VAC / 60HZ
Max 7W
Bulb included
cULus Listed SBLED
1x solid metal light shade
1x hand-blown glass globe
E26 compatible

INCLUDED

1 x Forked Pendant
1 x Forked Shade
1 x Forked Globe
1 x Punch Bulb / Puck

FINISH & SKU NUMBERS

sku:	finish:	size:
NFP-813164	 brass	MEDIUM
NFP-893194	 burnt steel	MEDIUM
NFP-863184	 gun metal	MEDIUM
NFP-833174	 steel	MEDIUM

CARE INSTRUCTIONS

Wipe with dry cloth with no loose hairs, avoid using any chemicals. Please note all finishes are prone to aging.

PLEASE NOTE

DISCLAIMER: Always consult a trade professional when installing this light. Buster + Punch is not responsible for the usage or feasibility of installation requirements. This product is not suitable for damp or wet environments.