

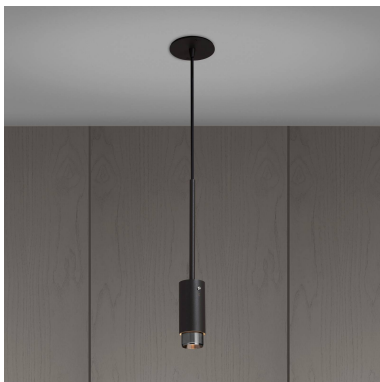
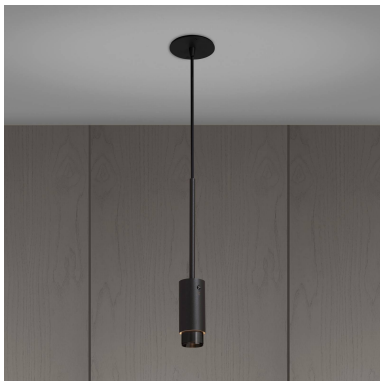
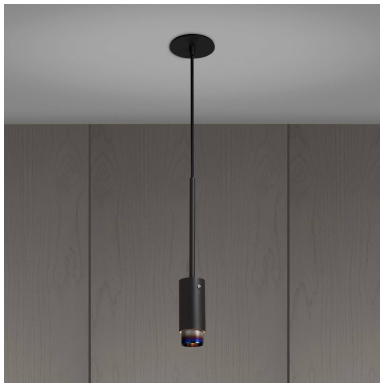
EXHAUST PENDANT / LINEAR / GRAPHITE

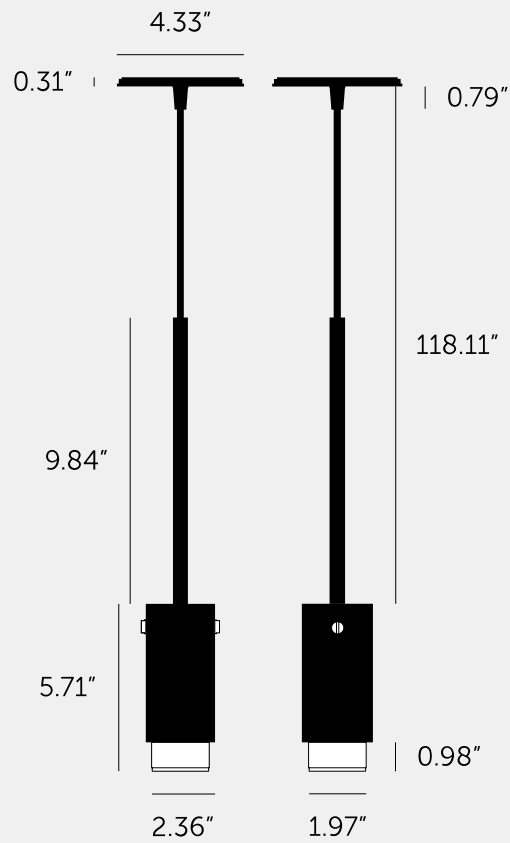
ACTION: PENDANT

KNURL: LINEAR

RANGE: EXHAUST

A pendant spotlight with a powder coated metal body and solid metal detailing. The pendant features our signature solid metal linear-knurl baffle and machined screws. The baffle captures light and creates a delicate metallic glow, whilst a honeycomb filter delivers a precise, low-glare, directional light. This spotlight fits a GU10 bulb, sold separately.





SPECIFICATIONS

Pendant spotlight
GU10 / 110 - 120 VAC / Dry Locations
Max 1 x 9W LED GU10 bulb
*Bulb sold separately
CB certified / Class 1

INCLUDED

1 x Exhaust Pendant Body
1x Exhaust Detail Kit
1 x Honeycomb Filter
1 x Ceiling rose extender
*
* The following come in separate boxes:
1 x Baffle*
2 x Torx Screws*

FINISH & SKU NUMBERS

| sku: | finish: | size: |
|-------------|-------------|-------|
| NEIG-183943 | brass | |
| NEIG-683944 | burnt steel | |
| NEIG-693945 | gun metal | |
| NEIG-193946 | steel | |

CARE INSTRUCTIONS

Wipe with lint-free cloth with no loose hairs, avoid using any chemicals. Please note all finishes are prone to aging.

PLEASE NOTE

DISCLAIMER: Always consult a trade professional when installing this Exhaust Spotlight. Buster + Punch is not responsible for the usage or feasibility of installation requirements. This product is not suitable for damp or wet environments.