

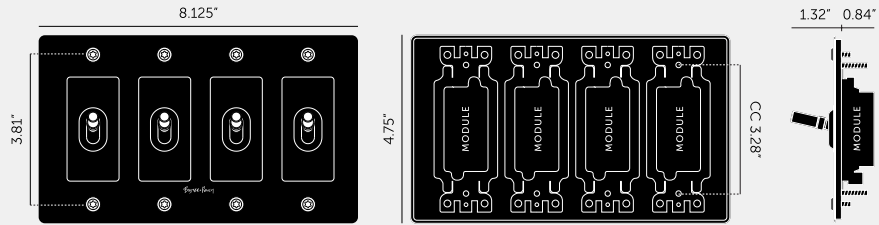
## 4G TOGGLE SWITCH / LINEAR / WITH LOGO

**ACTION: TOGGLE SWITCH**

**RANGE: TOGGLE SWITCH**

A solid metal toggle switch with our new linear knurl toggle to feel amazing with every touch. The switch is finished with a flat plate and our signature solid metal torx screws. Available in five different finishes. You can also team them up with our dimmers, duplex and USB outlets in matching finishes.





#### SPECIFICATIONS

Our Metal Electricity range has solid stainless steel plates, in our signature white, steel, brass, smoked bronze and black finishes.

Module: NTM-01384 (US-TO-MO-A)

Style: On/ Off Toggle switch

120-277V AC /15 A / 60 HZ

3 way switching (can be controlled from 2 locations)

Certification: cETLus 5005703"

#### INCLUDED

1 x 4G Wall Plate

4 x Toggle Module

4 x Toggle Detail Kits

#### FINISH & SKU NUMBERS

sku:	finish:	size:
NTK-024411	● black	4G
NTK-054412	● brass	4G
NTK-074414	● steel	4G
NTK-094413	● smoked bronze	4G
NTK-144415	● white	4G

#### CARE INSTRUCTIONS

Wipe with a dry lint free cloth with no loose hairs, avoid using any chemicals. Please note that finishes may age naturally with time and regular use.

#### PLEASE NOTE

DISCLAIMER: Always consult a trade professional when installing this product. Buster + Punch is not responsible for the usage or feasibility of installation requirements. This product is not suitable for damp or wet environments.