

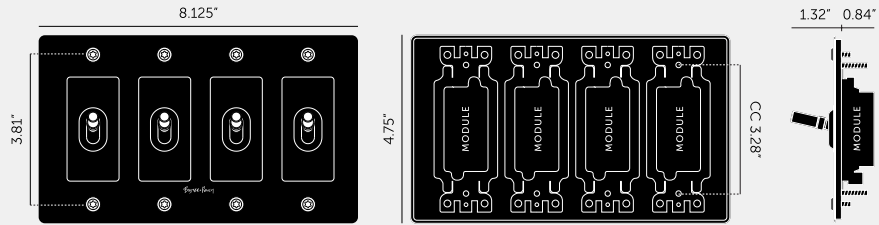
## 4G TOGGLE SWITCH / CROSS / WITH LOGO

**ACTION: TOGGLE SWITCH**

**RANGE: TOGGLE SWITCH**

A solid metal toggle switch with our signature diamond-cut cross knurl toggle to feel amazing with every touch. The switch is finished with a flat plate and our signature solid metal coin caps. Available in five different finishes. You can also team them up with our dimmers, duplex and USB outlets in matching finishes.





### SPECIFICATIONS

Our Metal Electricity range has solid stainless steel plates, in our signature white, steel, brass, smoked bronze and black finishes.

Module: NTM-01384 (US-TO-MO-A)

Style: On/ Off Toggle switch

120-277V AC /15 A / 60 HZ

3 way switching (can be controlled from 2 locations)

Certification: cETLus 5005703"

### INCLUDED

- 1 x 4G Wall Plate
- 4 x Toggle Module
- 4 x Toggle Detail Kits

### FINISH & SKU NUMBERS

sku:	finish:	size:
NTK-024401	● black	4G
NTK-054402	● brass	4G
NTK-094403	● smoked bronze	4G
NTK-074404	● steel	4G
NTK-144405	● white	4G

### CARE INSTRUCTIONS

Wipe with a dry lint free cloth with no loose hairs, avoid using any chemicals. Please note that finishes may age naturally with time and regular use.

### PLEASE NOTE

DISCLAIMER: Always consult a trade professional when installing this product. Buster + Punch is not responsible for the usage or feasibility of installation requirements. This product is not suitable for damp or wet environments.