

## 4G PLATE / WITHOUT LOGO

---

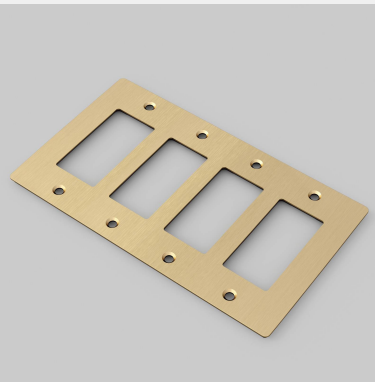
**ACTION: ELECTRICITY WALL PLATE**

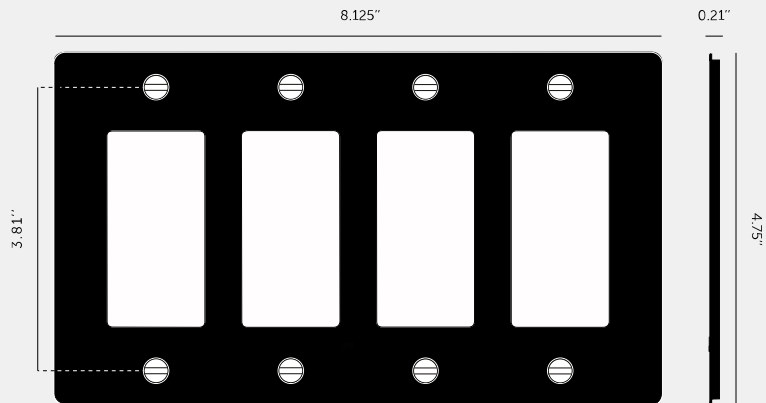
---

**RANGE: WALL PLATES**

---

Decorative cover plate sets in a variety of quality finishes, complete with flush fitting infills. Designed to be completed with range of module inserts to suit a broad spectrum of requirements for lighting control, power supply and device charging. Always finish with our signature details kit & coin screws.





#### SPECIFICATIONS

Our Metal Electricity range has solid stainless steel plates, in our signature white, steel, brass, smoked bronze and black finishes.

Style: 4G metal plate + infills.

For use with class 1 modules only / Must be grounded.

Recommended Electrical Back Box:

Standard 4G electrical box. See dimensions of chosen modules for required back box depth. Box must be flush mounted.

This piece features a 1/8" (4mm) shadow gap when installed.

#### INCLUDED

1 x 4G Wall Plate  
4 x Toggle Infills  
4 x Dimmer Infills  
8 x Plate Fixing Screws

#### FINISH & SKU NUMBERS

sku:	finish:	size:
NPL-023592	● black	4G
NPL-053593	● brass	4G
NPL-093594	● smoked bronze	4G
NPL-073595	● steel	4G
NPL-143596	● white	4G

#### CARE INSTRUCTIONS

Wipe with a dry lint free cloth with no loose hairs, avoid using any chemicals. Please note that finishes may age naturally with time and regular use.

#### PLEASE NOTE

DISCLAIMER: Always consult a trade professional when installing this product. Buster + Punch is not responsible for the usage or feasibility of installation requirements. This product is not suitable for damp or wet environments.