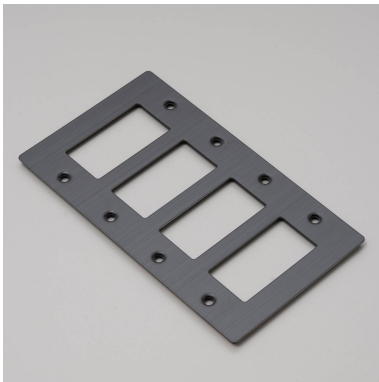
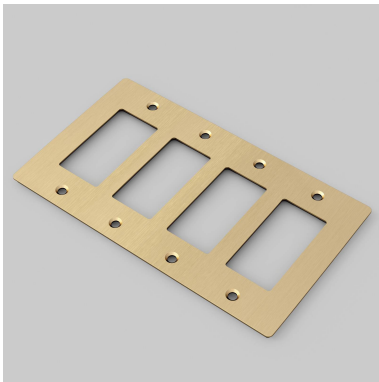


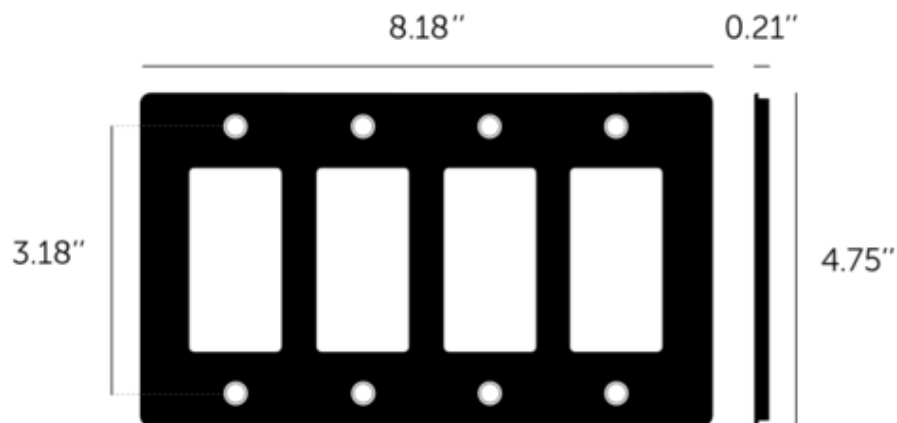
4G PLATE / WITHOUT LOGO

ACTION: ELECTRICITY WALL PLATE

RANGE: WALL PLATES

Decorative cover plate sets in a variety of quality finishes, complete with flush fitting infills. Designed to be completed with range of module inserts to suit a broad spectrum of requirements for lighting control, power supply and device charging. Always finish with our signature details kit & coin screws.





SPECIFICATIONS

Our Metal Electricity range has solid stainless steel plates, in our signature white, steel, brass, smoked bronze and black finishes.
Style: 4G metal plate + infills.
For use with class 1 modules only / Must be grounded.
Recommended back box:
Standard flush mounted 4G back box. See dimensions of chosen module(s) for required back box depth.

INCLUDED

1 x 4G Wall Plate

FINISH & SKU NUMBERS

finish:

size:

PLEASE NOTE

DISCLAIMER: Always consult a trade professional when installing this product. Buster + Punch is not responsible for the usage or feasibility of installation requirements. This product is not suitable for damp or wet environments.

CARE INSTRUCTIONS

Wipe with a dry lint free cloth with no loose hairs, avoid using any chemicals. Please note that finishes may age naturally with time and regular use.