

## 2G TOGGLE / CROSS / WITH LOGO

---

**ACTION: TOGGLE SWITCH**

---

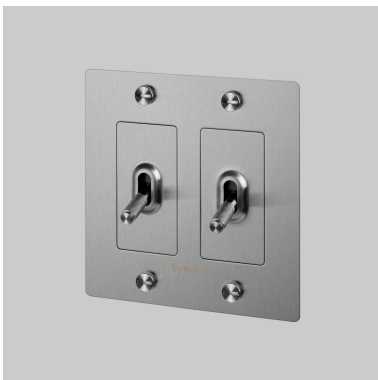
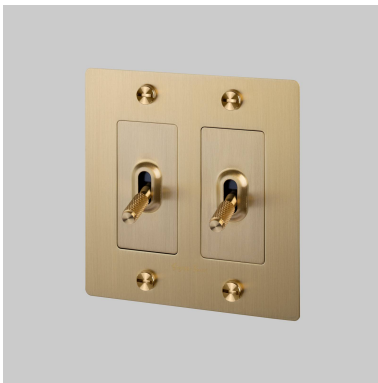
**KNURL: CROSS**

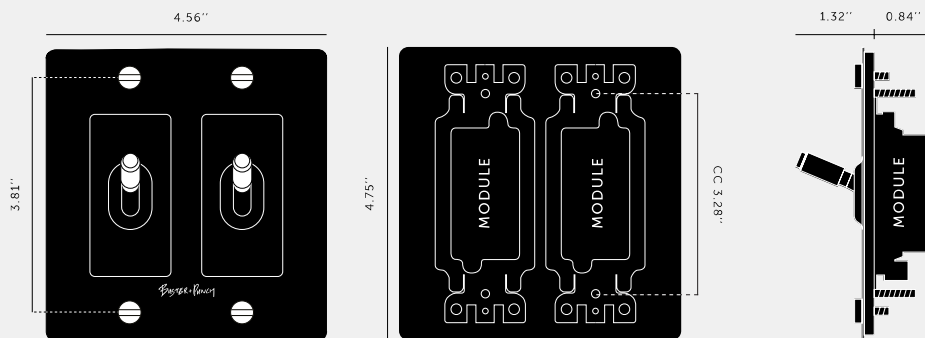
---

**RANGE: LIGHT SWITCHES**

---

A solid metal toggle switch with a diamond-cut or our newest linear knurled knob to feel amazing with every touch. The switch is finished with a flat plate and our signature solid metal coin/torx screws. Available in five different finishes. You can also team them up with our dimmers, duplex and USB outlets in matching finishes.





**SPECIFICATIONS**

Our Metal Electricity range has solid stainless steelplates, in our signature white, steel, brass, smokedbronze and black finishes.Module: NTM-01384 (US-TO-MO-A) (2 per unit)Style: On/ Off Toggle switch120-277V AC /15 A / 60 HZ3 way switching (can be controlled from 2 locations)Certification: cETLus 5005703

**INCLUDED**

- 1 x 2G Wall Plate
- 2 x Toggle Module
- 2 x Toggle Detail Kits

**FINISH & SKU NUMBERS**

sku:	finish:	size:
NTK-023432	● black	2G
NTK-053429	● brass	2G
NTK-453430	● smoked bronze	2G
NTK-073431	● steel	2G
NTK-143433	● white	2G

**CARE INSTRUCTIONS**

Wipe with a dry lint free cloth with no loose hairs, avoid using any chemicals. Please note that finishes may age naturally with time and regular use.

**PLEASE NOTE**

DISCLAIMER: Always consult a trade professional when installing this product. Buster + Punch is not responsible for the usage or feasibility of installation requirements. This product is not suitable for damp or wet environments.