

## 2G PLATE / WITHOUT LOGO

---

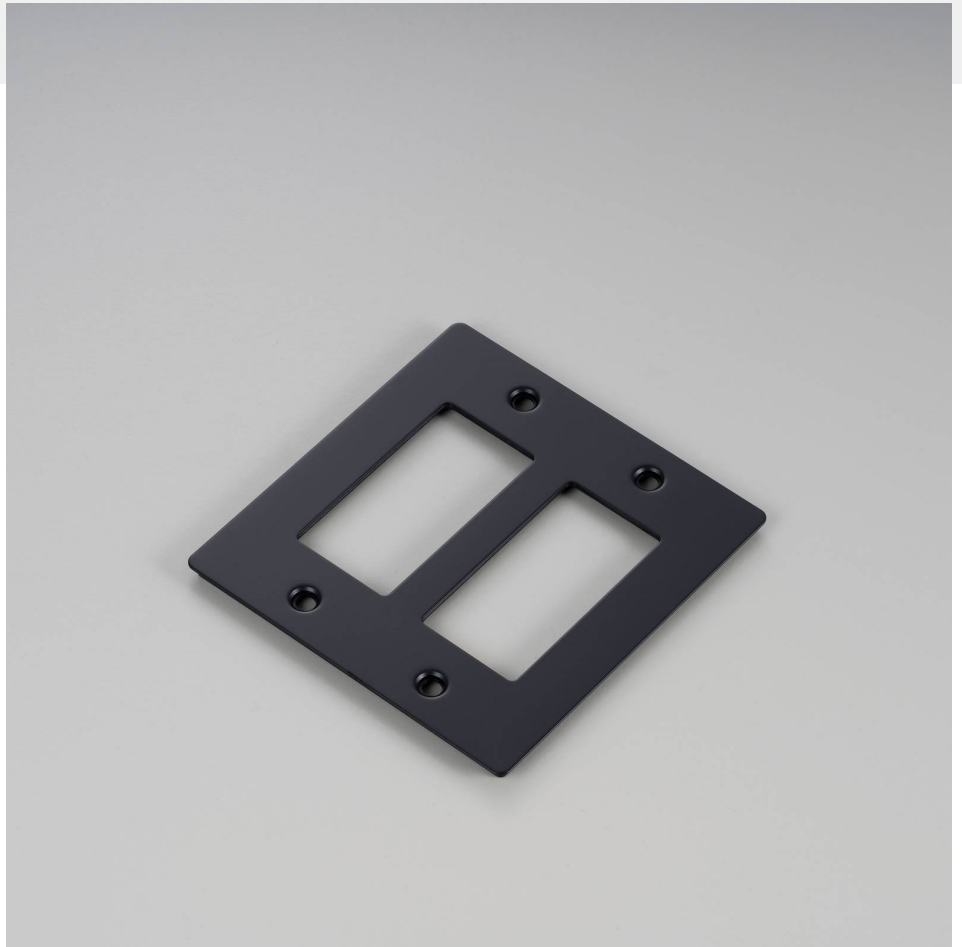
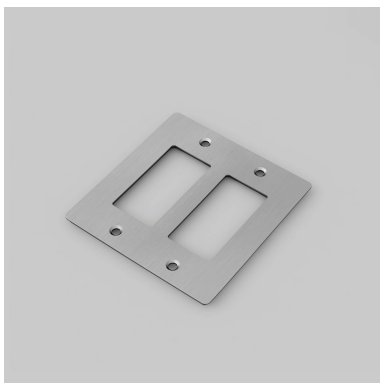
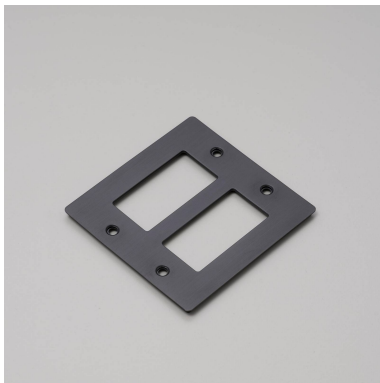
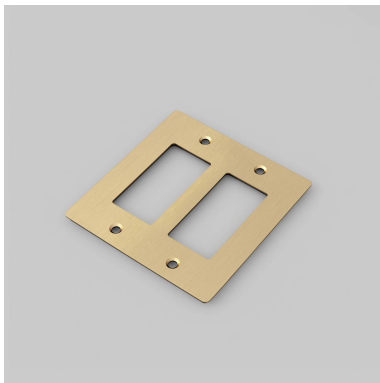
**ACTION: ELECTRICITY WALL PLATE**

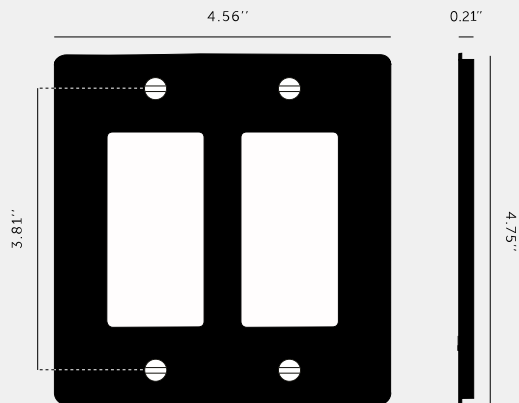
---

**RANGE: WALL PLATES**

---

Decorative cover plate sets in a variety of quality finishes, complete with flush fitting infills. Designed to be completed with range of module inserts to suit a broad spectrum of requirements for lighting control, power supply and device charging. Always finish with our signature details kit & coin screws.





**SPECIFICATIONS**

Our Metal Electricity range has solid stainless steel plates, in our signature white, steel, brass, smoked bronze and black finishes.  
Style: 2G metal plate + infills.  
For use with class 1 modules only / Must be grounded.  
Recommended back box:  
Standard flush mounted 2G back box. See dimensions of chosen module(s) for required back box depth.

**INCLUDED**

1 x 2G Wall Plate

**FINISH & SKU NUMBERS**

sku:	finish:	size:
NPL-023582	● black	2G
NPL-053583	● brass	2G
NPL-093584	● smoked bronze	2G
NPL-073585	● steel	2G
NPL-143586	● white	2G

**CARE INSTRUCTIONS**

Wipe with a dry lint free cloth with no loose hairs, avoid using any chemicals. Please note that finishes may age naturally with time and regular use.

**PLEASE NOTE**

DISCLAIMER: Always consult a trade professional when installing this product. Buster + Punch is not responsible for the usage or feasibility of installation requirements. This product is not suitable for damp or wet environments.