

## 2G PLATE / WITHOUT LOGO

---

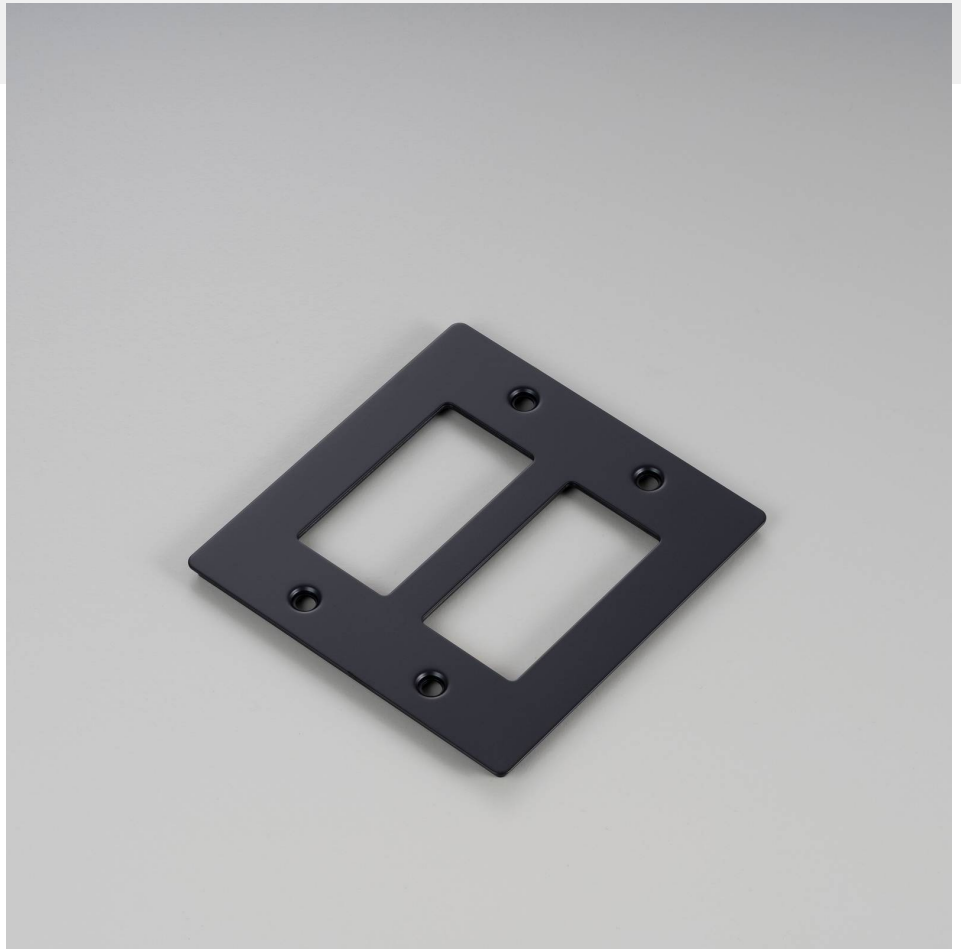
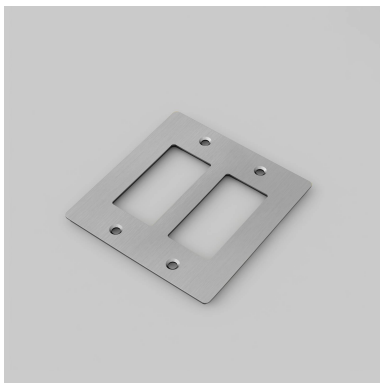
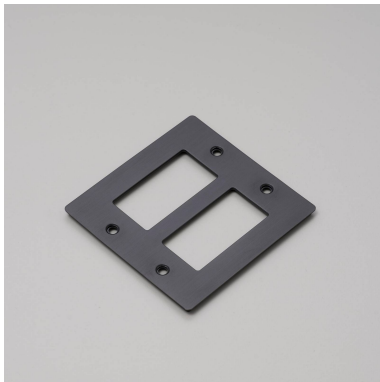
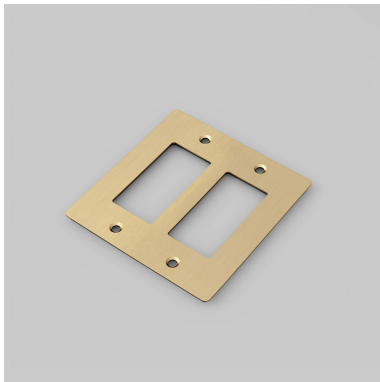
**ACTIONELECTRICITY WALL PLATE**

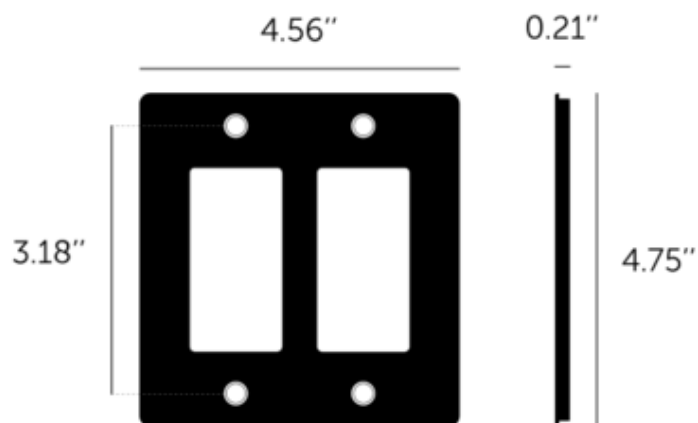
---

**RANGEWALL PLATES**

---

Decorative cover plate sets in a variety of quality finishes, complete with flush fitting infills. Designed to be completed with range of module inserts to suit a broad spectrum of requirements for lighting control, power supply and device charging. Always finish with our signature details kit & coin screws.





---

**SPECIFICATIONS**

---

Our Metal Electricity range has solid stainless steel plates, in our signature white, steel, brass, smoked bronze and black finishes.  
Style: 2G metal plate + infills.  
For use with class 1 modules only / Must be grounded.  
Recommended back box:  
Standard flush mounted 2G back box. See dimensions of chosen module(s) for required back box depth.

---

**INCLUDED**

---

1 x 2G Wall Plate

---

**FINISH & SKU NUMBERS**

---

**finish:**

**size:**

---

**PLEASE NOTE**

---

DISCLAIMER: Always consult a trade professional when installing this product. Buster + Punch is not responsible for the usage or feasibility of installation requirements. This product is not suitable for damp or wet environments.

---

**CARE INSTRUCTIONS**

---

Wipe with a dry lint free cloth with no loose hairs, avoid using any chemicals. Please note that finishes may age naturally with time and regular use.