

## **1G PLATE / WITHOUT LOGO**

---

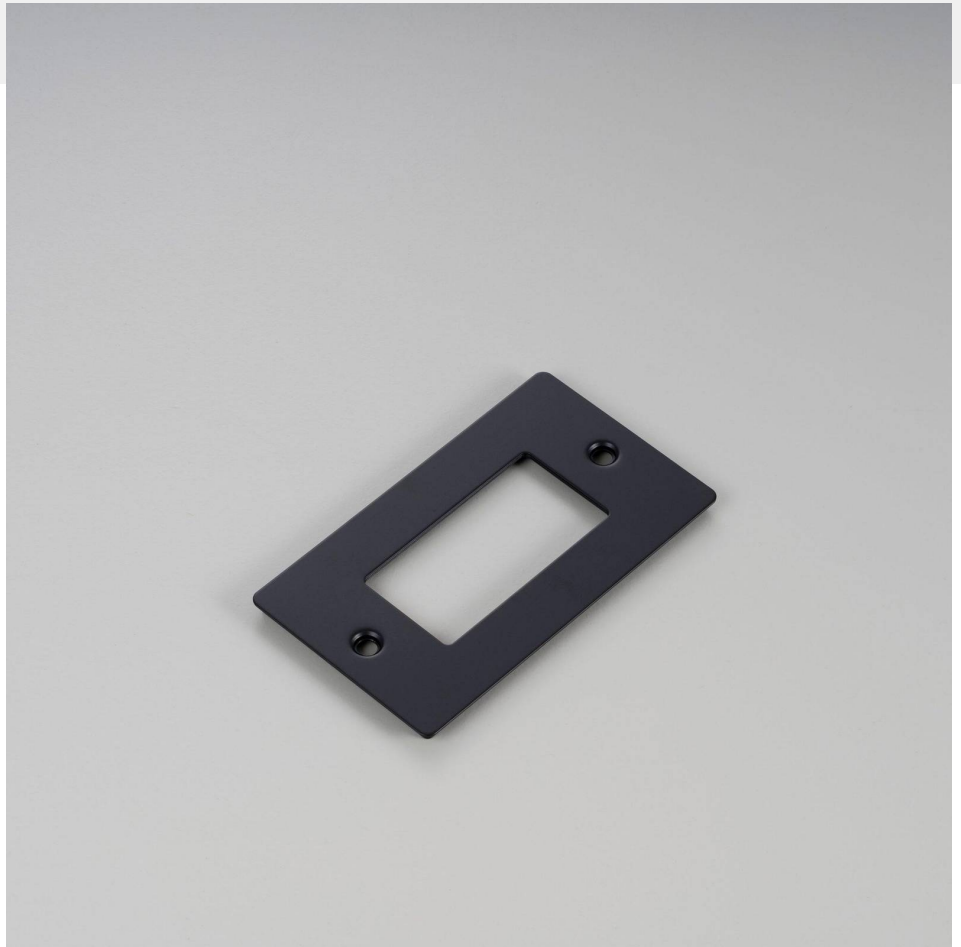
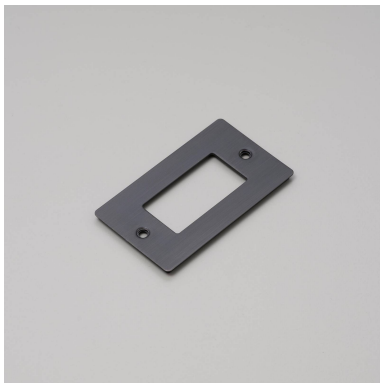
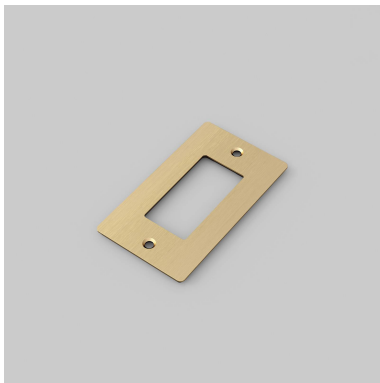
**ACTION: ELECTRICITY WALL PLATE**

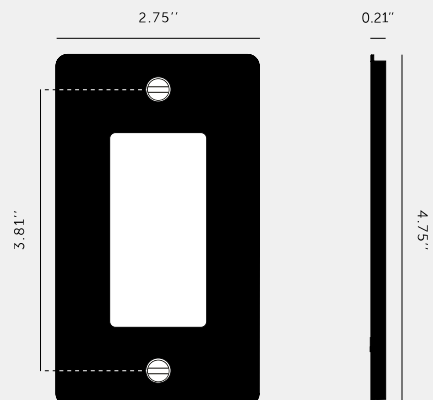
---

**RANGE: WALL PLATES**

---

Decorative cover plate sets in a variety of quality finishes, complete with flush fitting infills. Designed to be completed with range of module inserts to suit a broad spectrum of requirements for lighting control, power supply and device charging. Always finish with our signature details kit & coin screws.





#### SPECIFICATIONS

Our Metal Electricity range has solid stainless steel plates, in our signature white, steel, brass, smoked bronze and black finishes.  
Style: 1G metal plate + infills.  
For use with class 1 modules only / Must be grounded.  
Recommended Back Box:  
Standard flush mounted 1G back box. See dimensions of chosen module(s) for required back box depth.

#### INCLUDED

1 x 1G Wall Plate

#### FINISH & SKU NUMBERS

sku:	finish:	size:
NPL-023577	● black	1G
NPL-053578	● brass	1G
NPL-093579	● smoked bronze	1G
NPL-073580	● steel	1G
NPL-143581	● white	1G

#### CARE INSTRUCTIONS

Wipe with a dry lint free cloth with no loose hairs, avoid using any chemicals. Please note that finishes may age naturally with time and regular use.

#### PLEASE NOTE

DISCLAIMER: Always consult a trade professional when installing this product. Buster + Punch is not responsible for the usage or feasibility of installation requirements. This product is not suitable for damp or wet environments.