

## TOGGLE MODULE / STANDARD

---

**ACTION: TOGGLE MODULE**

---

---

**RANGE: ELECTRICITY MODULES**

---

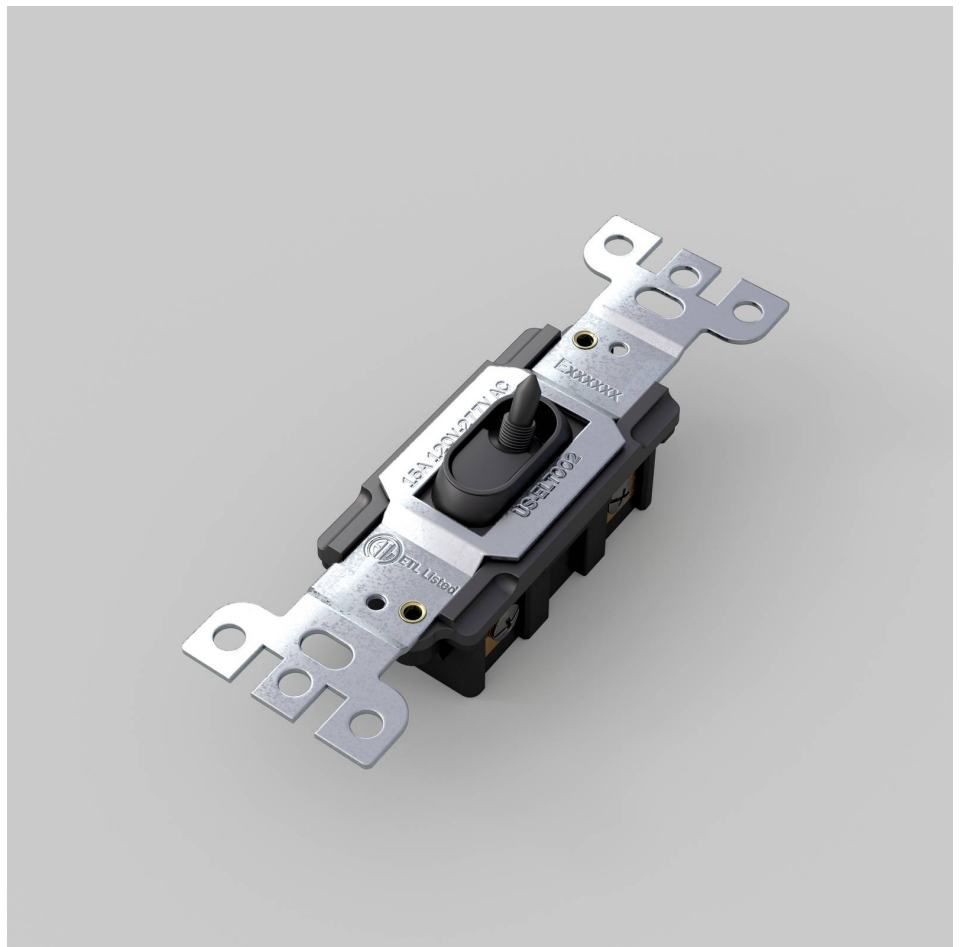
Style: On / Off Toggle Switch

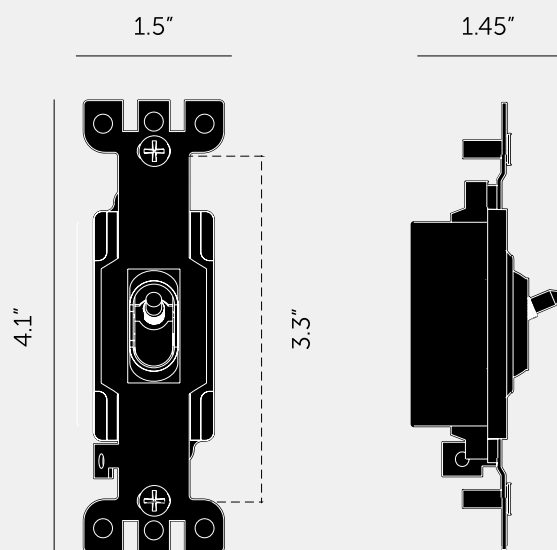
Input: 120 - 277VAC / 60Hz

Load: 15A

Switching: single circuit or 3-way circuits

This toggle module is compatible with our detail kits. Toggle modules from other suppliers are not compatible with our detail kits





#### SPECIFICATIONS

Style: On / Off Toggle Switch  
Input: 120 - 277VAC / 60Hz  
Load: 15A  
Switching: 3 way (max 2 per circuit)  
Certification: cETLus 5005703  
Compatiblity: 3-Way & 4-way switches.  
Not compatible with retractive switches, motors, fans or other inductive loads.  
Testing Includes:  
Overload - 125 cycles @ 150% max load  
Endurance - 10,000 cycles @ 100% max load  
Dielectric Voltage Withstand - 1500V

#### FINISH & SKU NUMBERS

sku:	finish:	size:
NTM-01384	● black	1G

#### CARE INSTRUCTIONS

Wipe with a dry lint free cloth with no loose hairs, avoid using any chemicals. Please note that finishes may age naturally with time and regular use.

#### INCLUDED

1 x Toggle Module

#### PLEASE NOTE

DISCLAIMER: Always consult a trade professional when installing this product. Buster + Punch is not responsible for the usage or feasibility of installation requirements. This product is not suitable for damp or wet environments.