

TOGGLE MODULE / 2 WAY / 10A

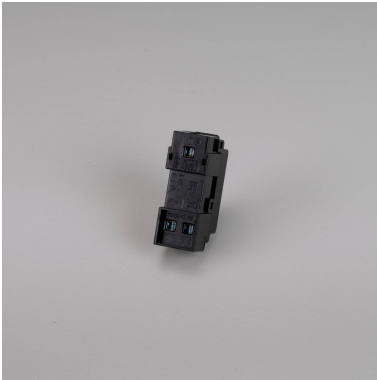
ACTION: TOGGLE MODULE

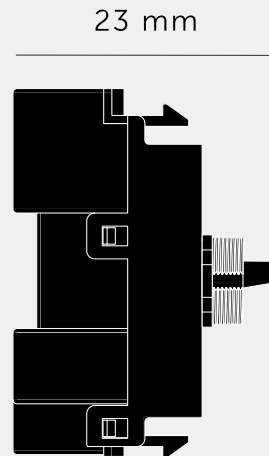
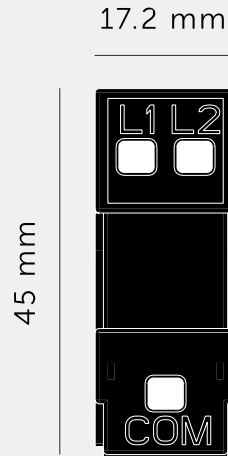
KNURL: N/A

RANGE: TOGGLE MODULE

A 2-way on/off toggle switch module for use with Buster + Punch's custom switches. Combine with a wall plate and detail kit in the finish and knurl of your choice to create a future-proof Buster + Punch switch – customised by you and engineered to perfection by us.

See tech spec for more information and compatibility. If in doubt, always consult a licensed electrician.





SPECIFICATIONS

Style: On / Off Toggle Switch
Switching: 2-way (can be controlled from 2 locations)
Input: 220-250 VAC
Load: 10AX
BS EN 60669
Certified for use in UK, Europe and EAEU:
UKCA / CE / EAC

For use with standard 1-way, 2-way and 3-way wiring accessories.
For use with Buster + Punch UK modular electricity plates.
Compatible with smart home systems that accept standard switch inputs.
Not compatible with retractive switches and Buster + Punch multipoint dimmers.
Not suitable for motors, fans or any other type of large inductive load.
Make sure to consider the inrush current load on the circuit when specifying this module (10AX max.).

FINISH & SKU NUMBERS

finish

size

INCLUDED

1 x 2-Way Toggle Module

PLEASE NOTE

DISCLAIMER: Always consult a trade professional when installing this product. Buster + Punch is not responsible for the usage or feasibility of installation requirements. This product is not suitable for damp or wet environments.

CARE INSTRUCTIONS

Wipe with a dry lint free cloth with no loose hairs, avoid using any chemicals. Please note that finishes may age naturally with time and regular use.