

**EXHAUST SURFACE /  
CROSS / GRAPHITE**

---

**ACTION: SURFACE MOUNTED**

---

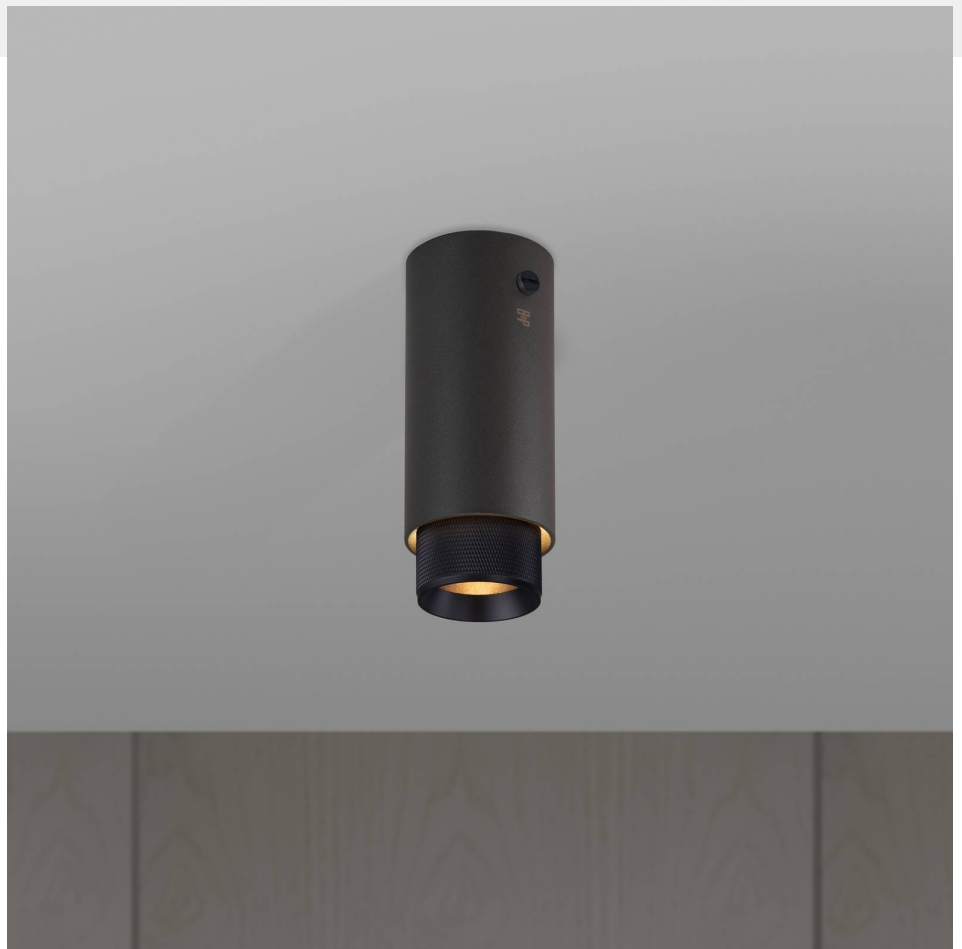
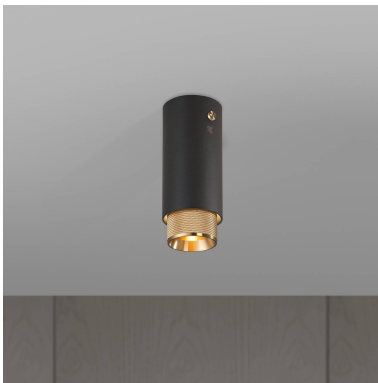
**KNURL: CROSS**

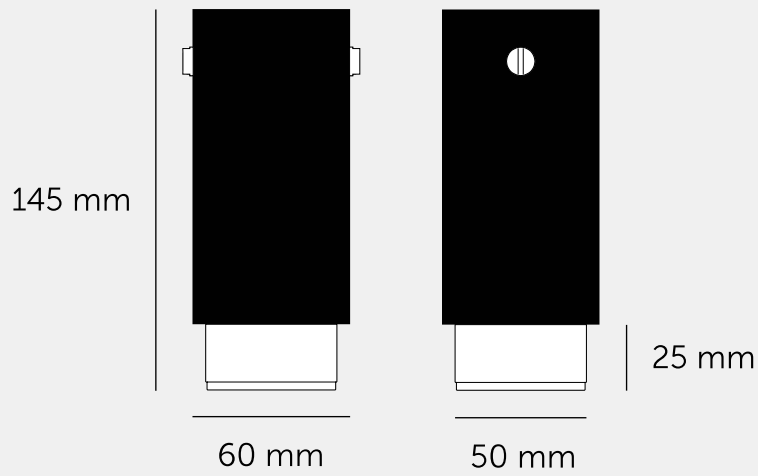
---

**RANGE: SPOTLIGHTS**

---

A surface mounted, fixed spotlight with a powder coated metal body and solid metal detailing. The spotlight features our signature cross-knurl baffle and coin screws, both made from solid metal. The baffle captures light and creates a delicate metallic glow, while a honeycomb filter emits a precise, non-glare, directional spotlight. This spotlight fits a GU10 bulb, sold separately.






---

#### SPECIFICATIONS

---

Fixed spotlight  
 GU10 / 200-240VAC / IP20  
 Max 1 x 9W LED GU10 bulb  
 \*Bulb sold separately  
 CB certified / Class 1

---

#### INCLUDED

---

1 x Exhaust Surface Body  
 1 x Exhaust Detail Kit  
 1 x Honeycomb Filter  
 1 x Ceiling rose extender  
 \*  
 \* The following come in separate boxes:  
 1 x Baffle\*  
 2 x Torx Screws\*

---

#### FINISH & SKU NUMBERS

---

sku:	finish:	size:
REIG-943990	● black	
REIG-183991	● brass	
REIG-613992	● smoked bronze	
REIG-193993	● steel	

---

#### PLEASE NOTE

---

DISCLAIMER: Always consult a trade professional when installing this product. Buster + Punch is not responsible for the usage or feasibility of installation requirements. This product is not suitable for damp or wet environments.

---

#### CARE INSTRUCTIONS

---

Wipe with lint-free cloth with no loose hairs, avoid using any chemicals. Please note all finishes are prone to aging.