

**1G SOCKET /
SCHUKO TYPE F /
LINEAR / WITHOUT**

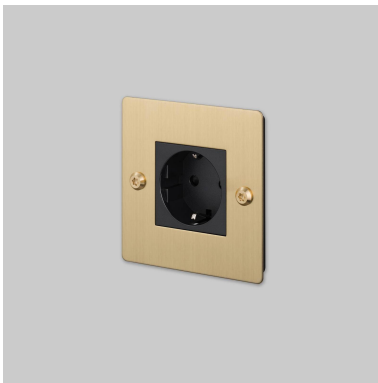
ACTION: POWER OUTLET

KNURL: CROSS

RANGE: POWER OUTLETS

A power outlet finished with a solid metal flat plate and our signature coin or Linear torx screws.

Available in five different finishes, they can be used in combination with our matching dimmers and toggle switches.



PENDING IMAGE

SPECIFICATIONS

Module Code: CSM-021896/ CSM-141904 (1 per unit)

Style: Schuko Socket Type F

Outlet: 250 V ~ / 50-60 Hz / 16A

*Certified for use in UK, Europe and Russia: UKCA / CE / EAC

INCLUDED

1 x Wall Plate

1 x Socket Module

1 x Toggle Detail Kit

FINISH & SKU NUMBERS

sku:	finish:	size:
CSC-024191	● black	1G
CSC-054192	● brass	1G
CSC-454094	● smoked bronze	1G
CSC-074095	● steel	1G
CSC-144096	● white	1G

CARE INSTRUCTIONS

Wipe with a dry lint free cloth with no loose hairs, avoid using any chemicals. Please note that finishes may age naturally with time and regular use.

PLEASE NOTE

DISCLAIMER: Always consult a trade professional when installing this product. Buster + Punch is not responsible for the usage or feasibility of installation requirements. This product is not suitable for damp or wet environments.