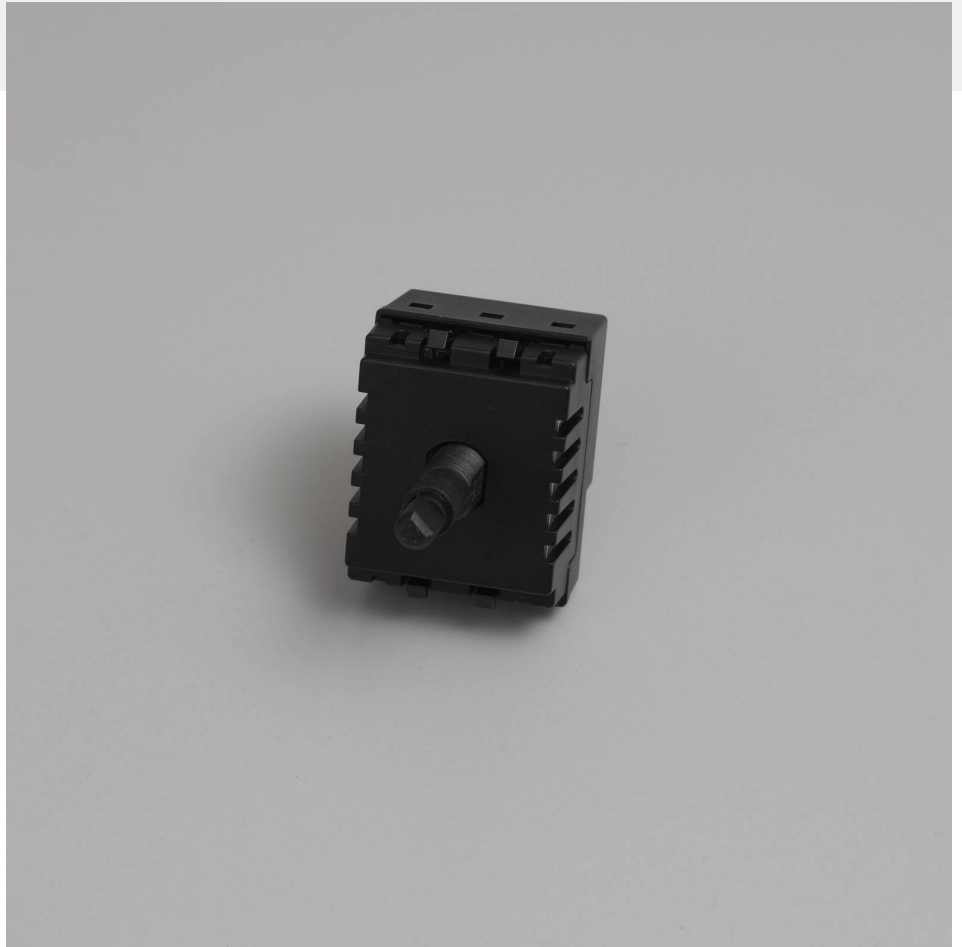


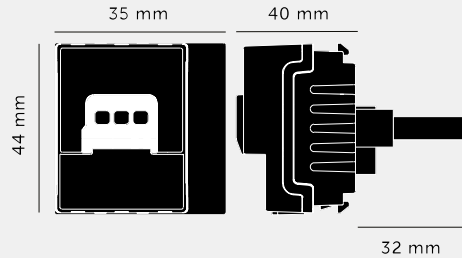
DIMMER MODULE / 100W LED / 2 WAY

ACTION: 100W

RANGE: DIMMER MODULE

A 100W LED dimmer module for use with Buster + Punch dimmer switches in the Australian and New Zealand region. Combine with Buster + Punch plates, detail kits and other modules to create your perfect switch.





SPECIFICATIONS

Style: Push On / Off Rotary Dimmer
Switching: 2-Way
Input: 240VAC
Dimming Type: Trailing Edge
Load: 10-250W - Incandescent / 2-100W - LED
Compatibility: For use with standard 1, 2 & 3 way switch circuits. Not compatible with Retractive Switching
For Use In: Australia, Europe & New Zealand
Certification: CE / EAC / SAA / UKCA BS EN60669-2-1, AS/NZS 60669.2.1, AS/NZS 60669.1

INCLUDED

1 x 100W LED Dimmer Module

FINISH & SKU NUMBERS

sku:	finish:	size:
CDM-012405	● black	N/A

PLEASE NOTE

DISCLAIMER: Always consult a trade professional when installing this product. Buster + Punch is not responsible for the usage or feasibility of installation requirements. This product is not suitable for damp or wet environments.

CARE INSTRUCTIONS

Wipe with a dry lint free cloth with no loose hairs, avoid using any chemicals. Please note that finishes may age naturally with time and regular use.