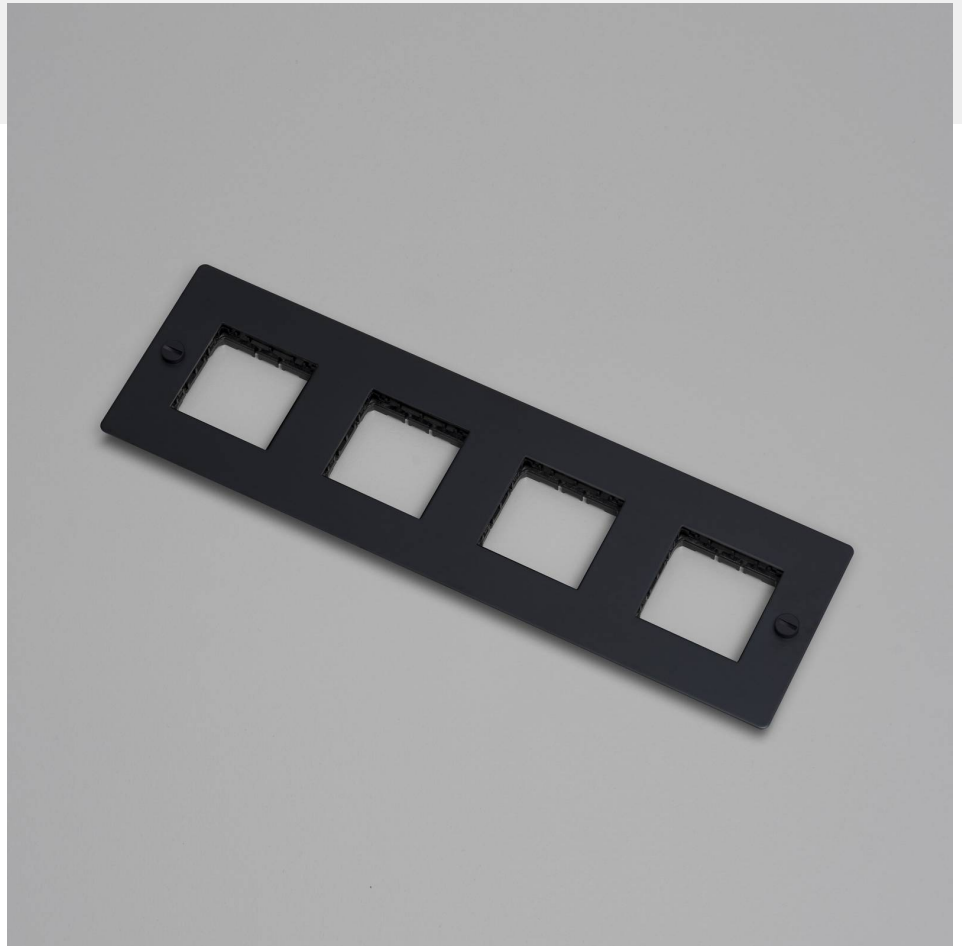
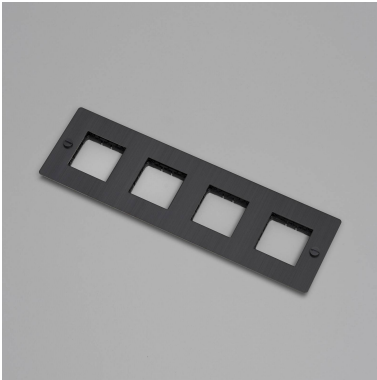


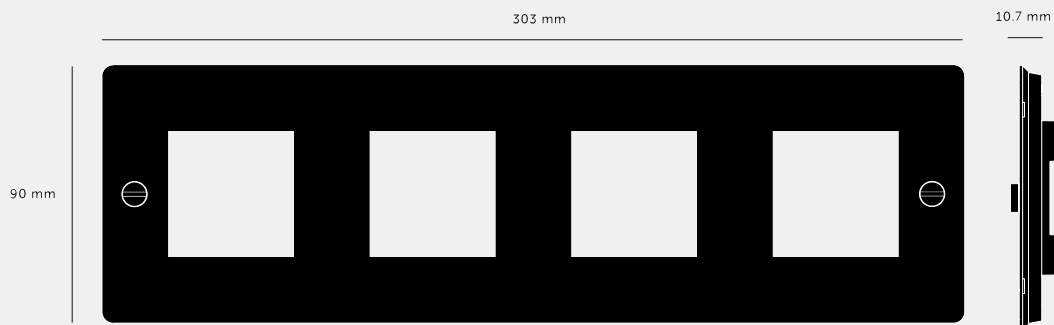
**4G WALL PLATE /
HORIZONTAL / NO
INFILLS / WITHOUT**

ACTION: ELECTRICITY WALL PLATE

RANGE: WALL PLATES

EU Plates are made in a variety of finishes with our signature solid metal coin screws. EU plates can be combined with module inserts to suit all your electrical, data, sound & AV needs. Module inserts can be purchased separately.





SPECIFICATIONS

Solid metal EU 4G electricity plate, in our signature white, steel, brass, smoked bronze and black finishes. Supplied without infills for use with 45mm sockets/modules.

Each plate opening fits 1 x 45mm module insert or 2 x 22.5mm module inserts.
Mounted horizontally.

Compatible with European standard electricity backboxes. See dimensions of chosen module for required backbox depth. Backbox must be flush mounted.

For indoor use only.

This piece features a 6.5mm shadow gap when installed.

FINISH & SKU NUMBERS

sku:	finish:	size:
CPL-022025	● black	4G
CPL-052026	● brass	4G
CPL-092028	● smoked bronze	4G
CPL-072027	● steel	4G
CPL-142024	● white	4G

INCLUDED

1 x 4G Wall Plate
2 x Coin Caps

PLEASE NOTE

DISCLAIMER: Always consult a trade professional when installing this product. Buster + Punch is not responsible for the usage or feasibility of installation requirements. This product is not suitable for damp or wet environments.

CARE INSTRUCTIONS

Wipe with a dry lint free cloth with no loose hairs, avoid using any chemicals. Please note that finishes may age naturally with time and regular use.