

## **2G TOGGLE / VERTICAL / 2-WAY / CROSS**

---

**ACTION: TOGGLE SWITCH**

---

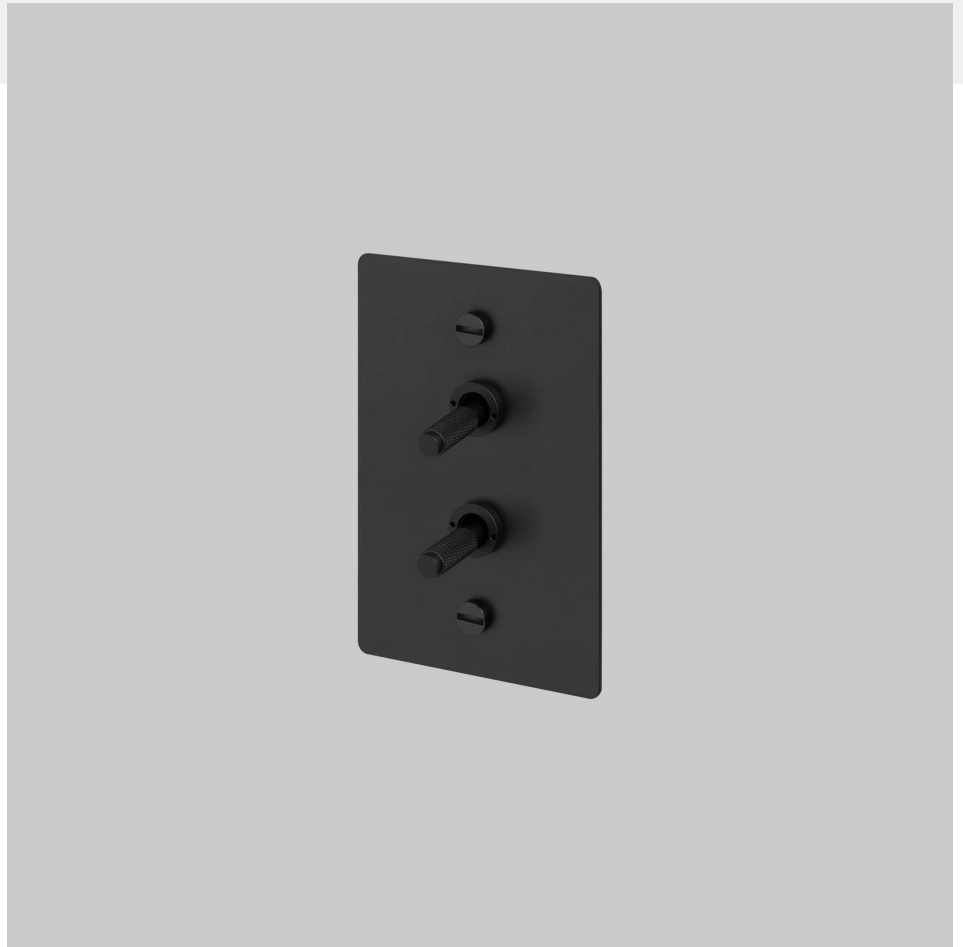
**KNURL: CROSS**

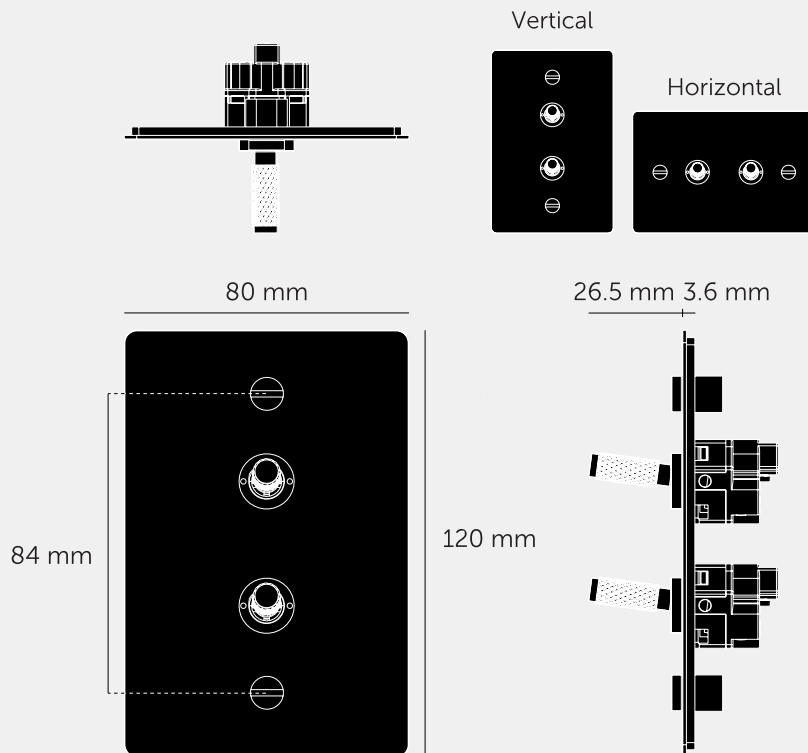
---

**RANGE: TOGGLE SWITCH**

---

A 2G (2-Way) Toggle Switch made from solid metal, featuring our signature diamond-cut, cross knurled toggle arm and plate details. This modular switch is designed for vertical installation, and the components will be delivered in separate boxes.





#### SPECIFICATIONS

Style: 2 x On / Off Toggle Switches  
Switching: 2 Way  
Input: 220-250VAC  
Load: 10AX  
Compatibility: For use with standard 1, 2 or 3 way switch circuits. Not compatible with Retractive Switching  
For Use In: Australia & New Zealand  
Compliant with - AS 3133:2020  
Certification: SAA-240105-EA  
Testing Includes: Endurance - 12,000 cycles @ 100% max load  
Resistance to Heat - 125C  
Dielectric Voltage Withstand - 2000V & 3000V  
Not Suitable for Fans, Motors or any other type of large inductive load. Consult an Electrician for use with Contactors.  
Product has been tested with major Smart Home Modules using Standard Switch inputs.

#### FINISH & SKU NUMBERS

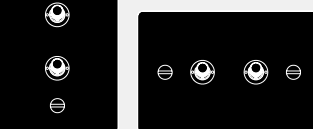
sku:	finish:	size:
ZTG-024102	● black	2G
ZTG-054103	● brass	2G
ZTG-454104	● smoked bronze	2G
ZTG-074105	● steel	2G
ZTG-144106	● white	2G

#### CARE INSTRUCTIONS

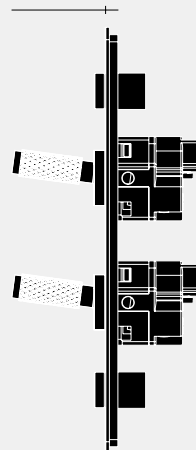
Wipe with a dry lint free cloth with no loose hairs, avoid using any chemicals. Please note that finishes may age naturally with time and regular use.

#### Vertical

#### Horizontal



26.5 mm 3.6 mm



#### INCLUDED

1 x 2G Plate  
2 x 2 Way Toggle Modules  
2 x Toggle Detail Kits (with plate details)

#### PLEASE NOTE

DISCLAIMER: Always consult a trade professional when installing this product. Buster + Punch is not responsible for the usage or feasibility of installation requirements. This product is not suitable for damp or wet environments.