

**1G DIMMER /  
HORIZONTAL /  
100W / CROSS**

---

**ACTION: DIMMER SWITCH**

---

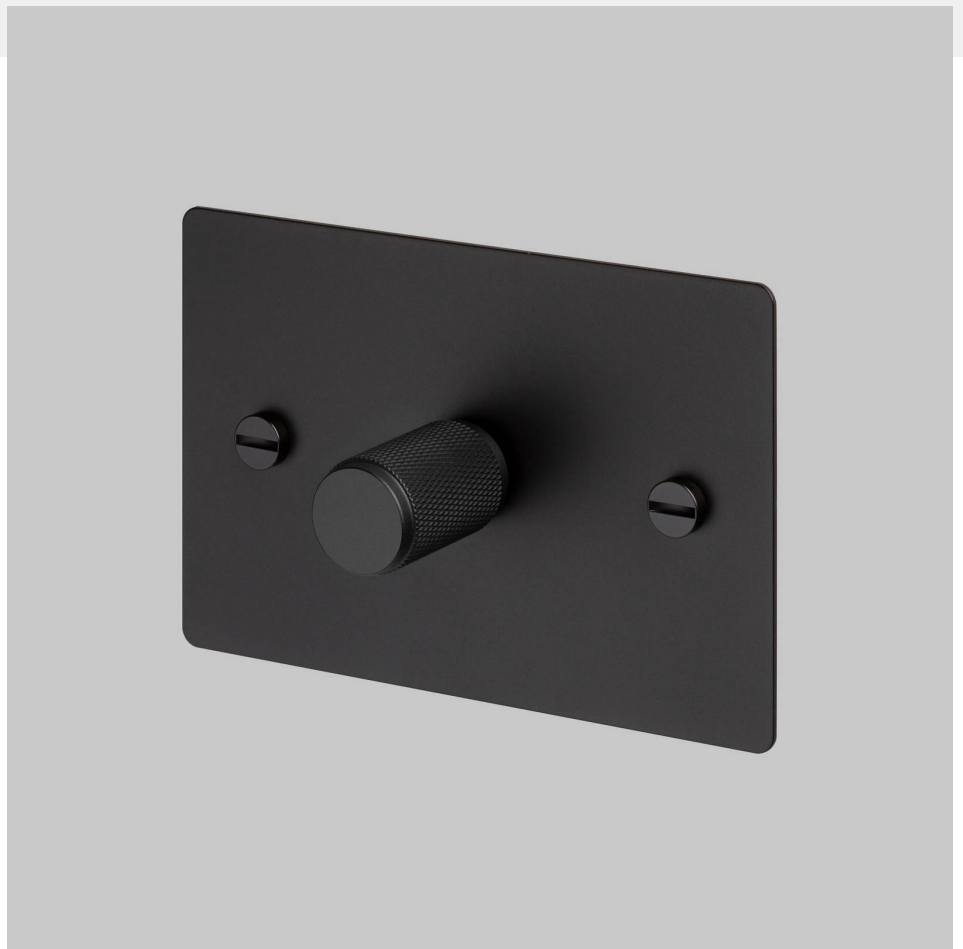
**KNURL: CROSS**

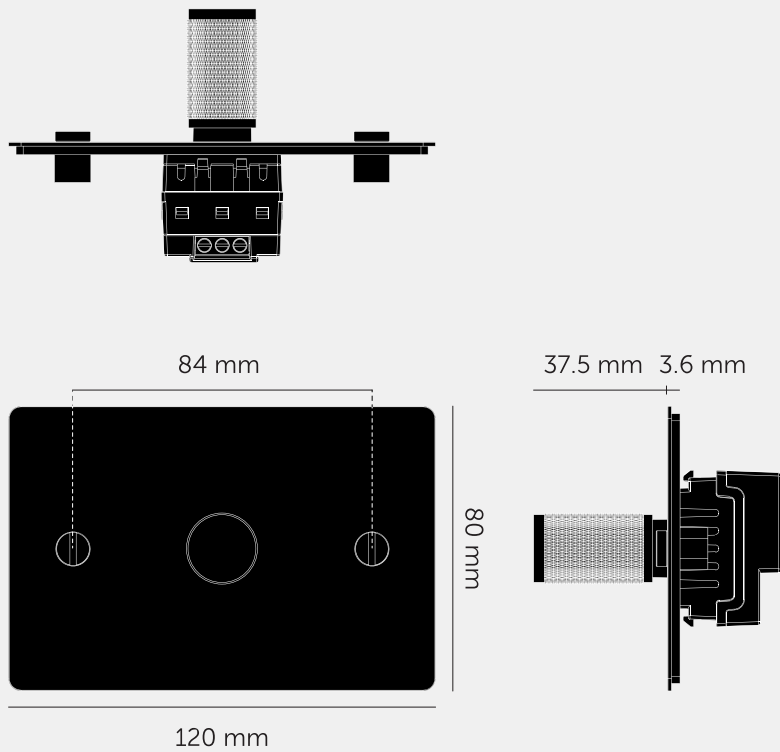
---

**RANGE: DIMMER SWITCH**

---

A 1G LED dimmer switch (100W) with a diamond-cut cross knurled knob to feel amazing with every touch. The dimmer comes with our new dimmer module with improved performance. This modular dimmer switch is designed for horizontal installation, and the components will be delivered in separate boxes.





#### SPECIFICATIONS

Style: Push On / Off Rotary Dimmer  
Switching: 2-Way  
Input: 240VAC  
Dimming Type: Auto Detect Trailing Edge & Leading Edge  
Load: 10-250W - Incandescent / 2-100W - LED  
Compatibility: For use with standard 1, 2 & 3 way switch circuits. Not compatible with Retractive Switching  
For Use In: Australia, Europe & New Zealand  
Certification: CE / EAC / SAA / UKCA BS EN60669-2-1, AS/NZS 60669.2.1, AS/NZS 60669.1

#### INCLUDED

1 x 1G Wall Plate  
1 x 100W Dimmer Module  
1 x Dimmer Detail Kit (with Plate Details)

#### FINISH & SKU NUMBERS

sku:	finish:	size:
ZDR-024531	● black	1G
ZDR-054532	● brass	1G
ZDR-454533	● smoked bronze	1G
ZDR-074534	● steel	1G
ZDR-144535	● white	1G
ZDK-134858	black / warm sunset	1G

#### CARE INSTRUCTIONS

Wipe with a dry lint free cloth with no loose hairs, avoid using any chemicals. Please note that finishes may age naturally with time and regular use.

#### PLEASE NOTE

DISCLAIMER: Always consult a trade professional when installing this product. Buster + Punch is not responsible for the usage or feasibility of installation requirements. This product is not suitable for damp or wet environments.