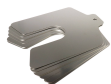


# Precision Brand Slotted Shim 75x75mmx0.40mm 22mm 300 Stainless Steel - 10 Piece



## Description

Precision Brand Slotted Shim 75x75mmx0.40mm 22mm 300 Stainless Steel - 10 Piece offers a precisely engineered solution for clearance adjustments and fine alignment procedures. Crafted from durable 300 stainless steel, it delivers consistent performance and ease during mechanical assembly tasks. The slotted design facilitates secure placement in metric applications. Suitable for both outdoor and indoor use, it supports accurate measurements and effective alignment, proving a valuable tool for trade professionals seeking dependable precision in their work.

## Features

- Manufactured from 300 stainless steel for durability
- Precise slotted design for accurate mechanical adjustments
- Silver finish improves visibility and ease of handling
- Inline metric sizing for predictable component interfaces
- Rugged construction supports reliable performance in varied applications
- Precision Brand quality ensures consistent manufacturing accuracy
- Slotted design aids precise adjustments and alignments
- Engineered for accurate adjustments in diverse assembly tasks

**Product Code: SHIM81330**

## Specifications

Outdoor Use	Yes
Indoor Use	Yes
Hardware Included	No
Unit of Measure	Metric
<b>Appearance</b>	
Product Colour	Silver
<b>Construction</b>	
Product Material 1	300 Stainless Steel

## Weights

Product Weight (grams)	193.69
Product Weight (kg)	0.19369

## Dimensions

Product Width (mm)	75
Product Length (mm)	75
Slot Depth (mm)	22
Thickness (mm)	0.4
Tolerance (mm)	+/- .045

NSW/ACT Chris Caruana 0431 151 883 chris.c@ehi.com VIC/TAS/SA Trent Rapp 0412 444 133 trent.p@ehi.com.au  
QLD Stephen Duncan 0458 203 917 stephen.d@ehi.com.au WA Greg Martin 0417 959 925 greg.m@ehi.com.au

[www.ehi.com.au](http://www.ehi.com.au)

For all enquiries please contact our customer service team  
on 1300 727 535 or at [cs@ehi.com.au](mailto:cs@ehi.com.au)

POWERED BY  
**EHI**  
AUSTRALIA