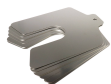


# Precision Brand Slotted Shim 75x75mmx0.10mm 22mm 300 Stainless Steel - 10 Piece



## Description

Precision Brand Slotted Shim 75x75mmx0.10mm 22mm 300 Stainless Steel - 10 Piece is engineered from high-grade 300 stainless steel to deliver reliable precision in equipment assembly tasks. It is designed for accurate spacing and alignment, offering consistent performance for trade professionals. Suitable for both indoor and outdoor use, its exact dimensions and robust construction facilitate precise installation and maintenance, ensuring effective utilisation in applications that require accurate metric measurements.

## Features

- Precision Brand slotted shim manufactured in 300 stainless steel
- Nominal dimensions of 75x75mm by 0.10mm thickness
- Engineered for close dimensional tolerances and precise fitting
- Corrosion resistant silver finish for outdoor and indoor use
- Reliable metric measurements enabling precise assembly
- Lightweight design streamlines handling and installation tasks
- Durable construction ensures long-lasting performance in varied applications
- Precision engineered shape facilitates easy alignment and secure fitting

**Product Code: SHIM81315**

## Specifications

Outdoor Use	Yes
Indoor Use	Yes
Hardware Included	No
Unit of Measure	Metric
<b>Appearance</b>	
Product Colour	Silver
<b>Construction</b>	
Product Material 1	300 Stainless Steel

## Weights

Product Weight (grams)	75.3
Product Weight (kg)	0.0753

## Dimensions

Product Width (mm)	75
Product Length (mm)	75
Slot Depth (mm)	22
Thickness (mm)	0.1
Tolerance (mm)	+/- .010

NSW/ACT Chris Caruana 0431 151 883 chris.c@ehi.com VIC/TAS/SA Trent Rapp 0412 444 133 trent.p@ehi.com.au  
QLD Stephen Duncan 0458 203 917 stephen.d@ehi.com.au WA Greg Martin 0417 959 925 greg.m@ehi.com.au

[www.ehi.com.au](http://www.ehi.com.au)

For all enquiries please contact our customer service team  
on 1300 727 535 or at [cs@ehi.com.au](mailto:cs@ehi.com.au)

POWERED BY  
**EHI**  
AUSTRALIA