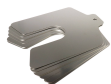


Precision Brand Slotted Shim 75x75mmx0.025mm 22mm 300 Stainless Steel - 10 Piece



Description

Precision Brand Slotted Shim 75x75mmx0.025mm 22mm 300 Stainless Steel - 10 Piece is a precisely engineered shim crafted from 300 stainless steel with a silver finish. It is designed to provide accurate, repeatable spacing solutions for alignment and precise measurements in mechanical assemblies. The shim offers reliable performance, ensuring consistency in gap adjustments and contributing to the overall efficiency of technical applications in professional settings.

Features

- Constructed from 300 stainless steel for reliable performance
- Precision Brand design ensuring superior technical precision
- Silver finish improves aesthetic and corrosion resistance potential
- Custom slotted design for accurate gap adjustment
- Suitable for diverse work settings indoors and outdoors
- Metric dimensions 75x75mm facilitate precise engineering tolerances
- Ultra-thin stamp of 0.025mm aids spacing control
- Pack includes ten pieces for immediate application

Product Code: SHIM81305

Specifications

Outdoor Use	Yes
Indoor Use	Yes
Hardware Included	No
Unit of Measure	Metric
Appearance	
Product Colour	Silver
Construction	
Product Material 1	300 Stainless Steel

Weights

Product Weight (grams)	42.64
Product Weight (kg)	0.04264

Dimensions

Product Width (mm)	75
Product Length (mm)	75
Slot Depth (mm)	22
Thickness (mm)	0.025
Tolerance (mm)	+/- .006

NSW/ACT Chris Caruana 0431 151 883 chris.c@ehi.com VIC/TAS/SA Trent Rapp 0412 444 133 trent.p@ehi.com.au
QLD Stephen Duncan 0458 203 917 stephen.d@ehi.com.au WA Greg Martin 0417 959 925 greg.m@ehi.com.au

www.ehi.com.au

For all enquiries please contact our customer service team
on 1300 727 535 or at cs@ehi.com.au

POWERED BY
EHI
AUSTRALIA