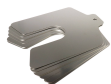


# Precision Brand Slotted Shim 50x50mmx0.050mm 16mm 300 Stainless Steel - 10 Piece



## Description

Precision Brand Slotted Shim 50x50mmx0.050mm 16mm 300 Stainless Steel - 10 Piece is designed for precise tolerance adjustments in assembly and maintenance projects. Constructed from high-quality 300 stainless steel with a silver finish, it offers reliable spacing in metric applications with detailed slotting features. Its design supports calibration and mounting tasks efficiently, making it a practical choice for trade professionals in various settings. The shim performs consistently in both indoor and outdoor conditions.

## Features

- Precision slotted shim fashioned from 300 stainless steel
- Polished silver finish facilitates identification during assembly
- Accurate dimensions for reliable alignment in assemblies
- Metric measurements ensure easy integration with layouts
- 50 x 50 mm shim with 0.050 mm thickness
- 16 mm slot provides precise positioning during installation
- Engineered for repeatable performance in quality applications
- Precision Brand design ensures consistent dimensional performance

**Product Code: SHIM81210**

## Specifications

Outdoor Use	Yes
Indoor Use	Yes
Hardware Included	No
Unit of Measure	Metric

## Appearance

Product Colour	Silver
----------------	--------

## Construction

Product Material 1	300 Stainless Steel
--------------------	---------------------

## Weights

Product Weight (grams)	32.21
Product Weight (kg)	0.03221

## Dimensions

Product Width (mm)	50
Product Length (mm)	50
Slot Depth (mm)	16
Thickness (mm)	0.05
Tolerance (mm)	+/- .006

NSW/ACT Chris Caruana 0431 151 883 chris.c@ehi.com VIC/TAS/SA Trent Rapp 0412 444 133 trent.p@ehi.com.au  
QLD Stephen Duncan 0458 203 917 stephen.d@ehi.com.au WA Greg Martin 0417 959 925 greg.m@ehi.com.au

[www.ehi.com.au](http://www.ehi.com.au)

For all enquiries please contact our customer service team  
on 1300 727 535 or at [cs@ehi.com.au](mailto:cs@ehi.com.au)

POWERED BY  
**EHI**  
AUSTRALIA