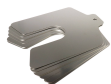


# Precision Brand Slotted Shim 50x50mmx0.025mm 16mm 300 Stainless Steel - 10 Piece



## Description

Precision Brand Slotted Shim 50x50mmx0.025mm 16mm 300 Stainless Steel - 10 Piece. Manufactured from high-grade 300 stainless steel, this shim facilitates accurate spacing adjustments and precise alignment in mechanical assemblies and calibration tasks. Its metric dimensions enable exact calculations for quality control and assembly tolerance. Designed for outdoor and indoor use, it offers consistent performance that supports the work of trade professionals in achieving reliable and repeatable engineering outcomes.

## Features

- Accurate 50 by 50 mm dimensions with 0.025 mm thickness
- 300 stainless steel construction offers high durability
- Slotted design enhances versatility in precise adjustments
- Silver finish provides a neat modern appearance
- Compact 16 mm slot supports secure positioning
- Metric measurements ensure precise spacing alignment
- Designed for practical use in various settings
- Pack of 10 shims meets professional application needs

**Product Code: SHIM81205**

## Specifications

Outdoor Use	Yes
Indoor Use	Yes
Hardware Included	No
Unit of Measure	Metric
<b>Appearance</b>	
Product Colour	Silver
<b>Construction</b>	
Product Material 1	300 Stainless Steel

## Weights

Product Weight (grams)	27.22
Product Weight (kg)	0.02722

## Dimensions

Product Width (mm)	50
Product Length (mm)	50
Slot Depth (mm)	16
Thickness (mm)	0.025
Tolerance (mm)	+/- .006

NSW/ACT Chris Caruana 0431 151 883 chris.c@ehi.com VIC/TAS/SA Trent Rapp 0412 444 133 trent.p@ehi.com.au  
QLD Stephen Duncan 0458 203 917 stephen.d@ehi.com.au WA Greg Martin 0417 959 925 greg.m@ehi.com.au

[www.ehi.com.au](http://www.ehi.com.au)

For all enquiries please contact our customer service team  
on 1300 727 535 or at [cs@ehi.com.au](mailto:cs@ehi.com.au)

POWERED BY  
**EHI**  
AUSTRALIA