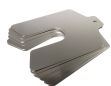


# Precision Brand Slotted Shim 8x8"x0.075" 2 3/8" 300 Stainless Steel - 5 Piece



## Description

Precision Brand Slotted Shim 8x8"x0.075" 2 3/8" 300 Stainless Steel - 5 Piece is a shim engineered in 300 stainless steel with a slotted design for precise fitting. It is suitable for both outdoor and indoor applications where accurate alignment is required in trade and industrial settings. The silver finish and imperial measurements ensure consistent performance and reliability, enabling professionals to achieve exact tolerances and efficient machinery adjustments with ease.

## Features

- Constructed from 300 stainless steel for durability and corrosion resistance
- Silver finish enhances appearance and simplifies visual inspections
- Precise slotted design offers controlled fit for applications
- Dual suitability for indoor and outdoor projects
- Uniform dimensions provide consistent spacing for assemblies
- Imperial unit measurements offer familiar sizing references
- Robust construction supports demanding projects and operations
- Pack includes five shims for flexible design adjustments

**Product Code: SHIM42855**

## Specifications

Outdoor Use	Yes
Indoor Use	Yes
Hardware Included	No
Unit of Measure	Imperial

## Appearance

Product Colour	Silver
----------------	--------

## Construction

Product Material 1	300 Stainless Steel
--------------------	---------------------

## Weights

Product Weight (grams)	3,116.23
Product Weight (kg)	3.11623

## Dimensions

Product Width (IN)	8
Product Length (IN)	8
Slot Depth (IN)	3/8
Thickness (mm)	2
Thickness (IN)	0.075
Tolerance (mm)	+/- .066

NSW/ACT Chris Caruana 0431 151 883 chris.c@ehi.com VIC/TAS/SA Trent Rapp 0412 444 133 trent.p@ehi.com.au  
QLD Stephen Duncan 0458 203 917 stephen.d@ehi.com.au WA Greg Martin 0417 959 925 greg.m@ehi.com.au

[www.ehi.com.au](http://www.ehi.com.au)

For all enquiries please contact our customer service team  
on 1300 727 535 or at [cs@ehi.com.au](mailto:cs@ehi.com.au)

POWERED BY  
**EHI**  
AUSTRALIA