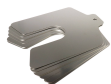


Precision Brand Slotted Shim 8x8"x0.015" 2 3/8" 300 Stainless Steel - 5 Piece



Description

Precision Brand Slotted Shim 8x8"x0.015" 2 3/8" 300 Stainless Steel - 5 Piece. This shim is manufactured from high-quality 300 stainless steel with a silver finish designed for accurate alignment and precise spacing in technical assemblies. Its slotted design supports repeatable adjustments in assembly tasks and offers a consistent solution for measurement-critical installations. The product is suitable for both indoor and outdoor applications, ensuring reliability in various work settings.

Features

- Precision engineered slotted shim for accurate adjustments
- Built from durable 300 stainless steel ensuring reliable strength
- Polished silver finish resists corrosion in varied settings
- Slotted design allows precise positioning for alignment tasks
- Suitable for both indoor and outdoor applications
- Imperial measurements ensure compatibility with established fixtures
- Engineered for repeatable outcomes in mechanical assemblies
- Reliable component for precise adjustments in demanding applications

Product Code: SHIM42835

Specifications

Outdoor Use	Yes
Indoor Use	Yes
Hardware Included	No
Unit of Measure	Imperial

Appearance

Product Colour	Silver
----------------	--------

Construction

Product Material 1	300 Stainless Steel
--------------------	---------------------

Weights

Product Weight (grams)	666.79
Product Weight (kg)	0.66679

Dimensions

Product Width (IN)	8
Product Length (IN)	8
Slot Depth (IN)	3/8
Thickness (mm)	0.38
Thickness (IN)	0.015
Tolerance (mm)	+/- .045

NSW/ACT Chris Caruana 0431 151 883 chris.c@ehi.com VIC/TAS/SA Trent Rapp 0412 444 133 trent.p@ehi.com.au
QLD Stephen Duncan 0458 203 917 stephen.d@ehi.com.au WA Greg Martin 0417 959 925 greg.m@ehi.com.au

www.ehi.com.au

For all enquiries please contact our customer service team
on 1300 727 535 or at cs@ehi.com.au

POWERED BY
EHI
AUSTRALIA