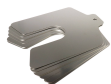


Precision Brand Slotted Shim 8x8"x0.004" 2 3/8" 300 Stainless Steel - 5 Piece



Description

Precision Brand Slotted Shim 8x8"x0.004" 2 3/8" 300 Stainless Steel - 5 Piece is designed for precise alignment and dimensional adjustments in assembly. Made from 300 stainless steel with a silver finish, this shim offers reliable and repeatable accuracy for trade professionals. Its engineered slotted design facilitates fine-tuning in various applications, providing measurable improvements in fit and performance across diverse settings.

Features

- Precision construction from durable 300 stainless steel
- Accurate slotted design offers repeatable alignment for setups
- Available in silver finish for clear scheme consistency
- Shim provides adjustable spacing in varied installation scenarios
- Imperial measurements ensure exact fit for standard assemblies
- Constructed for reliable performance under diverse installation conditions
- Engineered to maintain precise alignment over extended durations
- Includes five precision shims for flexible adjustments

Product Code: SHIM42820

Specifications

Outdoor Use	Yes
Indoor Use	Yes
Hardware Included	No
Unit of Measure	Imperial

Appearance

Product Colour	Silver
----------------	--------

Construction

Product Material 1	300 Stainless Steel
--------------------	---------------------

Weights

Product Weight (grams)	213.19
Product Weight (kg)	0.21319

Dimensions

Product Width (IN)	8
Product Length (IN)	8
Slot Depth (IN)	3/8
Thickness (mm)	0.1
Thickness (IN)	0.004
Tolerance (mm)	+/- .010

NSW/ACT Chris Caruana 0431 151 883 chris.c@ehi.com VIC/TAS/SA Trent Rapp 0412 444 133 trent.p@ehi.com.au
QLD Stephen Duncan 0458 203 917 stephen.d@ehi.com.au WA Greg Martin 0417 959 925 greg.m@ehi.com.au

www.ehi.com.au

For all enquiries please contact our customer service team
on 1300 727 535 or at cs@ehi.com.au

POWERED BY
EHI
AUSTRALIA