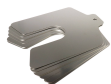


Precision Brand Slotted Shim 8x8"x0.002" 2 3/8" 300 Stainless Steel - 5 Piece



Description

Precision Brand Slotted Shim 8x8"x0.002" 2 3/8" 300 Stainless Steel - 5 Piece is engineered for precise fitting and load-bearing assembly alignment. Manufactured from 300 Stainless Steel, it is suitable for both indoor and outdoor applications. The slotted design offers clear measurement control and easy adjustment, benefiting industrial and trade professionals by ensuring consistent, accurate spacing in various assembly tasks. Its robust construction supports reliable performance over time.

Features

- Crafted from durable 300 stainless steel
- Slotted design for precise adjustment
- Available in a silver finish
- Precise dimensions enable accurate adjustment
- Pack includes five shims for flexible installation
- Engineered with precise machining for consistent performance
- Imperial measurements suit standard engineering practices
- Robust construction withstands varied environmental conditions

Product Code: SHIM42810

Specifications

Outdoor Use	Yes
Indoor Use	Yes
Hardware Included	No
Unit of Measure	Imperial

Appearance

Product Colour	Silver
----------------	--------

Construction

Product Material 1	300 Stainless Steel
--------------------	---------------------

Weights

Product Weight (grams)	145.15
Product Weight (kg)	0.14515

Dimensions

Product Width (IN)	8
Product Length (IN)	8
Slot Depth (IN)	3/8
Thickness (mm)	0.05
Thickness (IN)	0.002
Tolerance (mm)	+/- .006

NSW/ACT Chris Caruana 0431 151 883 chris.c@ehi.com VIC/TAS/SA Trent Rapp 0412 444 133 trent.p@ehi.com.au
QLD Stephen Duncan 0458 203 917 stephen.d@ehi.com.au WA Greg Martin 0417 959 925 greg.m@ehi.com.au

www.ehi.com.au

For all enquiries please contact our customer service team
on 1300 727 535 or at cs@ehi.com.au

POWERED BY
EHI
AUSTRALIA