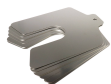


# Precision Brand Slotted Shim 2x2"x0.001" 5/8" 300 Stainless Steel - 20 Piece



## Description

Precision Brand Slotted Shim 2x2"x0.001" 5/8" 300 Stainless Steel - 20 Piece is manufactured from 300 stainless steel to offer exact spacing and adjustment capability. It is designed for use in precise alignment and set-up tasks, providing a reliable solution for professionals in trade and related sectors. The slotted design facilitates accurate modifications and fine-tuning, ensuring ease of assembly and consistent performance in both outdoor and indoor applications.

## Features

- 300 stainless steel construction ensures long lasting durability
- Precision engineered shim with slotted design offers accurate adjustments
- Silver finish provides a sleek modern appearance
- For versatile use indoors and outdoors with robust build
- Compact design enables precise flexible positioning during adjustments
- Manufactured with Imperial dimensions ensuring accurate measurement values
- Available as a 20-piece set for simplified inventory management
- Built to resist weather challenges with a quality finish

**Product Code: SHIM42205**

## Specifications

Outdoor Use	Yes
Indoor Use	Yes
Hardware Included	No
Unit of Measure	Imperial
<b>Appearance</b>	
Product Colour	Silver
<b>Construction</b>	
Product Material 1	300 Stainless Steel

## Weights

Product Weight (grams)	13.61
Product Weight (kg)	0.01361

## Dimensions

Product Width (IN)	2
Product Length (IN)	2
Slot Depth (IN)	5/8
Thickness (mm)	0.025
Thickness (IN)	0.001
Tolerance (mm)	+/- .006

NSW/ACT Chris Caruana 0431 151 883 chris.c@ehi.com VIC/TAS/SA Trent Rapp 0412 444 133 trent.p@ehi.com.au  
QLD Stephen Duncan 0458 203 917 stephen.d@ehi.com.au WA Greg Martin 0417 959 925 greg.m@ehi.com.au

[www.ehi.com.au](http://www.ehi.com.au)

For all enquiries please contact our customer service team  
on 1300 727 535 or at [cs@ehi.com.au](mailto:cs@ehi.com.au)

POWERED BY  
**EHI**  
AUSTRALIA