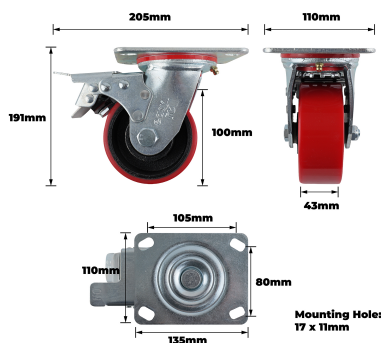
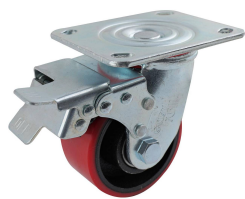


Easyroll 100mm Urethane Cast Iron Swivel Plate Brake J3 Series Castor 320kg



Description

Easyroll 100mm Urethane Cast Iron Swivel Plate Brake J3 Series Castor 320kg is designed to provide reliable, controlled movement and support for precise load handling. Its steel frame and housing, coupled with polyurethane wheels and ball bearings, ensure durability and smooth operation. The red, black, and silver design offers technical aesthetics without excess flair. The plate mount with a built-in swivel attachment facilitates efficient repositioning for professional trade applications.

Features

- Constructed with durable steel housing and wheel core
- Polyurethane wheel combined with cast iron for stability
- Ball bearing system ensures smooth and reliable rotation
- Plate mount design with integrated swivel attachment
- Rated for maximum load of 320kg capacity
- Suitable for indoor and outdoor use
- Product available in red, black and silver
- 100mm wheel diameter for precise and controlled movement

Product Code: J32TZ85K100

Specifications

Outdoor Use	Yes
Indoor Use	Yes
Bearing Type	Ball Bearing
Raceway Type	Single
Attachments	Plate Swivel

Appearance

Product Colour	Red/Black/Silver
----------------	------------------

Construction

Wheel Core Material	Steel
Wheel Material	Polyurethane
Housing Material	Steel
Bearing Material	Steel

Weights

Product Weight (grams)	3035
Product Weight (kg)	3.035
Load Capacity kg	320.0

Dimensions

Product Length mm	205
Product Width mm	110
Product Height mm	191
Wheel Diameter	100
Tread Width mm	43
Swivel Radius mm	137.5
Mounting Hole Dimensions mm	17x11
Hole Centre Dimensions mm	105x80
Plate Dimensions mm	135x110

NSW/ACT Chris Caruana 0431 151 883 chris.c@ehi.com VIC/TAS/SA Trent Rapp 0412 444 133 trent.p@ehi.com.au
 QLD Stephen Duncan 0458 203 917 stephen.d@ehi.com.au WA Greg Martin 0417 959 925 greg.m@ehi.com.au