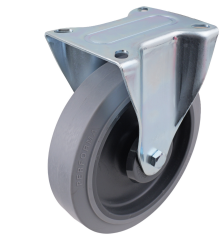


Colson 200mm Grey Performa Rubber Fixed Plate I6 Series Castor 280kg



Description

Colson 200mm Grey Performa Rubber Fixed Plate I6 Series Castor 280kg is engineered for efficient load mobility in professional settings. It features a robust design with a polypropylene wheel core and hi-tech Performa thermoplastic rubber wheel complemented by precision steel bearings. The zinc plated steel housing and rigid raceway ensure controlled movement and consistent performance for trade professionals. Its plate mount fitting supports both indoor and outdoor use, providing reliable operation in diverse applications.

Features

- Constructed with zinc plated steel housing for enhanced strength
- Equipped with Hi-Tech Performa Thermoplastic Rubber wheels for durability
- Precision steel bearings ensure smooth and stable rolling performance
- Polypropylene wheel core provides consistent stability and wear resistance
- Rigid raceway supports accurate directional movement
- Designed for outdoor and indoor operations for versatile application
- Precision bearing type enhances accurate rotational control in use
- Plate mount fitting simplifies installation on various underlying surfaces

Product Code: I63AZ-PL4T200

Specifications

Outdoor Use	Yes
Indoor Use	Yes
Bearing Type	Precision Bearing
Raceway Type	Rigid

Appearance

Product Colour	Silver/Grey
----------------	-------------

Construction

Wheel Core Material	Polypropylene
Wheel Material	Hi-Tech Performa Thermoplastic Rubber
Housing Material	Zinc Plated Steel
Bearing Material	Steel

Weights

Product Weight (grams)	2100
Product Weight (kg)	2.1
Load Capacity kg	280.0

Dimensions

Product Length mm	200
Product Width mm	110
Product Height mm	235
Wheel Diameter	200
Tread Width mm	50
Mounting Hole Dimensions mm	18x11
Hole Centre Dimensions mm	110/100x85/75
Plate Dimensions mm	135x110

NSW/ACT Chris Caruana 0431 151 883 chris.c@ehi.com VIC/TAS/SA Trent Rapp 0412 444 133 trent.p@ehi.com.au
 QLD Stephen Duncan 0458 203 917 stephen.d@ehi.com.au WA Greg Martin 0417 959 925 greg.m@ehi.com.au