

Description

Easyroll L Shape Corner Swivel Castor Accessory is engineered for seamless integration with swivel castor systems. Constructed from durable grey polypropylene, it provides effective corner protection and supports smooth mobility in both indoor and outdoor applications. This accessory enhances operational efficiency by maintaining alignment and safeguarding surfaces, offering a practical solution for industrial and trade professionals seeking reliable performance and low-maintenance reliability in their equipment setups.

Features

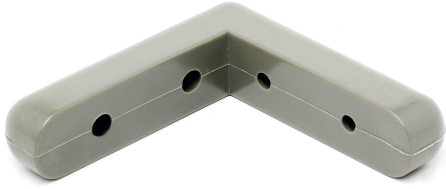
- Constructed with durable polypropylene for indoor outdoor use
- Designed for secure integration with swivel castors
- Lightweight design allows straightforward installation
- Provides precise buffering at corners to minimise wear
- Grey finish offers a discreet modern appearance
- Engineered for consistent performance under varied conditions
- Low-friction design improves movement efficiency
- Reliable accessory that supports daily castor function

Dimensions

Product Height (mm)	25
Product Width (mm)	25
Product Length (mm)	85

Weights

Product Weight (grams)	138
------------------------	-----



Product Code: BUFFER100X100

Specifications

Outdoor Use	Yes
Indoor Use	Yes
Hardware Included	No
Suitable For	Swivel Castor

Appearance

Product Colour	Grey
----------------	------

Construction

Product Material 1	Polypropylene
--------------------	---------------