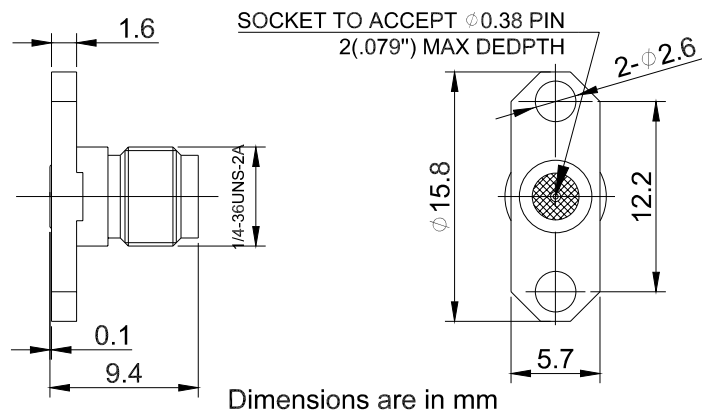


SMA Female Connector Field Replaceable with 2 Hole Flange, Hole Spacing 12.2mm, Acceptable Pin Diameter 0.38mm, DC-26.5GHz

P/N: FR2-SMA-KFD0438



Product Configuration

Body Style	Straight
Connector Series	SMA
Connector Polarity	Standard
Connector Gender	Female
Termination Type	Field Replaceable Contact
Connector Impedance (Ohm)	50
Mount Method	2 Hole Flange

Electrical Specifications

Frequency	DC-26.5GHz
VSWR	≤1.15
Insertion Loss	≤0.1 xSqt.(f_GHz)

Mechanical Data

Min. Mating Cycles	≥500
Body Material	Stainless Steel
Body Plating	Passivated

Enviromental Specifications

RoHS Compliant	Yes
Operating Temperature Range	-55 °C to +165 °C
MIL/STD	N/A