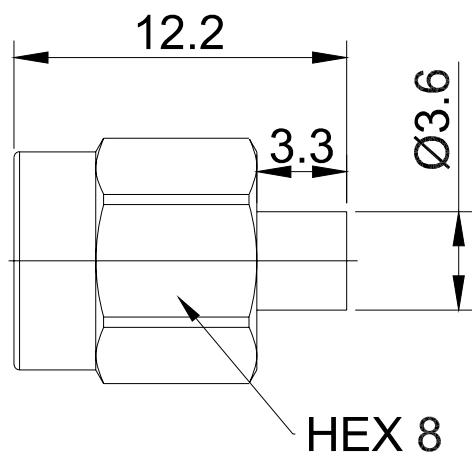


## SMA Female Reverse Polarity for .086" Series Cable | DC to 6GHz

P/N: FR2-RPSMA-KB2



Dimensions are in mm



### Product Configuration

Body Style	Straight
Connector Series	SMA
Connector Polarity	Reverse Polarity
Connector Gender	Female
Termination Type	Coax
Connector Impedance (Ohm)	50
Mount Method	None

### Electrical Specifications

Frequency	DC - 6GHz
VSWR / Return Loss	1.25
Insertion Loss	$\leq 0.10 \times \text{Sqrt}(f\_GHz)$

### Mechanical Data

Min. Mating Cycles	$\geq 500$
Body Material	Brass
Body Plating	Nickel

### Environmental Specifications

RoHS Compliant	Yes
Operating Temperature Range	-55 °C to +165 °C
MIL/STD	N/A