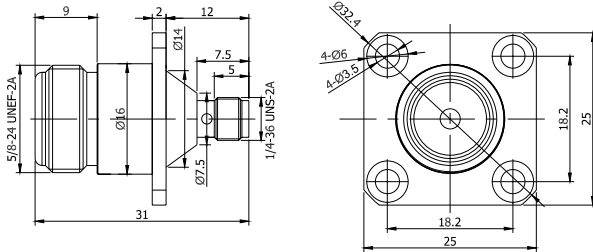


## N Female to SMA Female 4 Hole Flange Straight Adapter | DC to 12.7GHz

P/N: FR1-N/SMA-KFK



Dimensions are in mm



### Product Configuration

	Connector 1	Connector 2
Connector Series	N	SMA
Connector Polarity	Standard	Standard
Connector Gender	Female	Female
Connector Impedance (Ohm)	50	50
Body Style	Straight	Straight
Connector Body Material	Brass	Brass
Connector Body Plating	Nickel	Nickel
Mount Method	4 Hole Flange	4 Hole Flange

### Electrical Specifications

Frequency	DC - 12.7GHz
VSWR / Return Loss	1.25
Insertion Loss	$\leq 0.1 \times \text{Sqrt.}(f\_GHz)$

### Mechanical Data

Min. Mating Cycles	$\geq 500$
--------------------	------------

### Environmental Specifications

RoHS Compliant	Yes
Operating Temperature Range	-55 °C to +165 °C
MIL/STD	N/A

### Test Report

