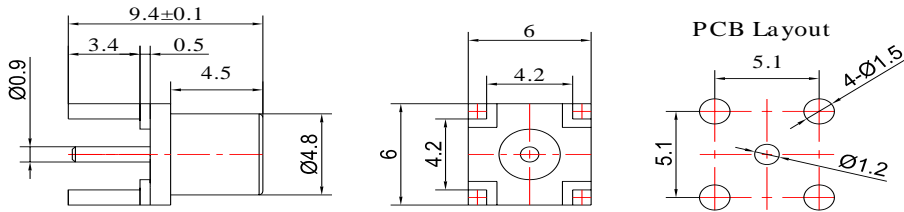


MCX Female Connector PCB Mount Soldering, DC - 6GHz

P/N: FR2-MCX-KHD101E



Dimensions are in mm



Product Configuration

Body Style	Straight
Connector Series	MCX
Connector Polarity	Standard
Connector Gender	Female
Termination Type	PCB
Connector Impedance (Ohm)	50
Mount Method	None

Electrical Specifications

Frequency	DC-6GHz
VSWR	1.2
Insertion Loss	$\leq 0.1 \times \text{Sqrt.}(f_GHz)$

Mechanical Data

Mating Cycles, Min	≥ 500
Weight	0.75 g
Body Material	Brass
Body Plating	Gold

Environmental Specifications

RoHS Compliant	Yes
Operating Temperature Range	-55 °C to +165 °C
MIL/STD	N/A